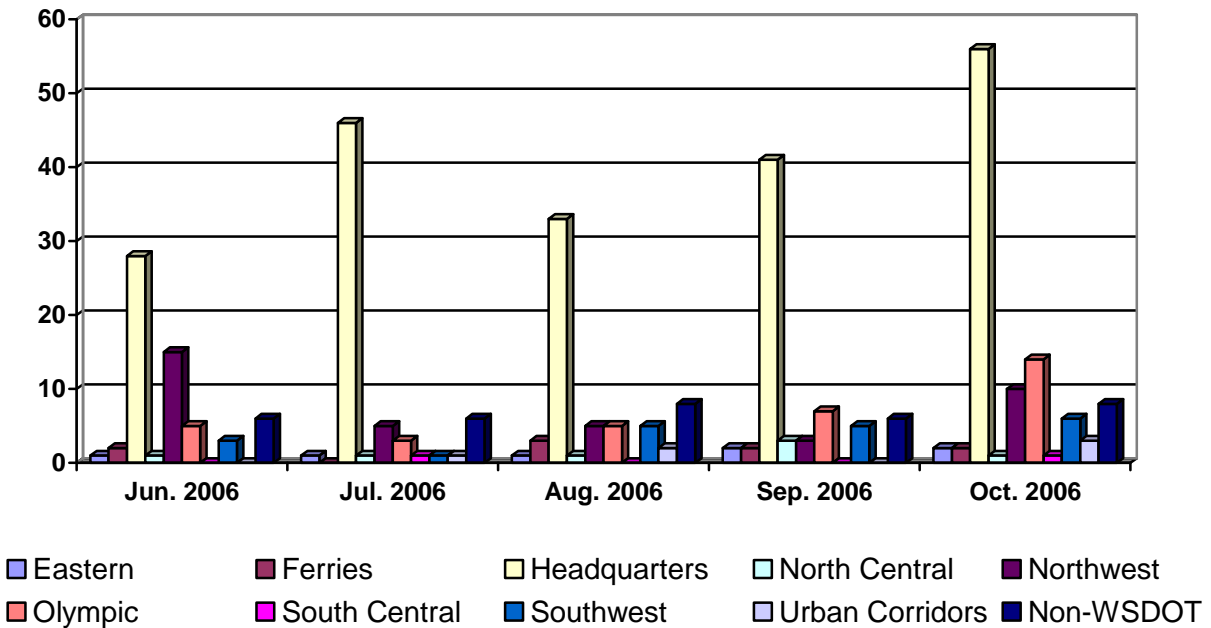


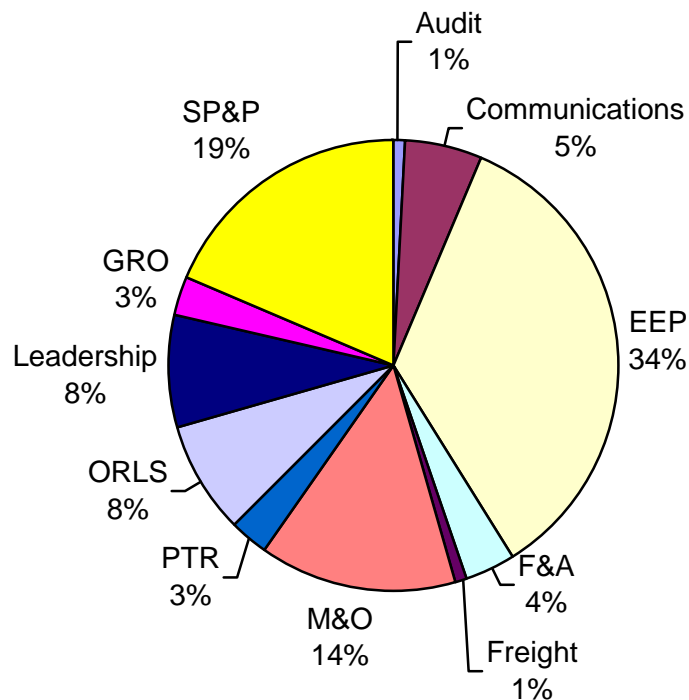
# Who's Using The Library?

## Library Use by Category



- The library is used by all regions
- Use of the library by all regions and modes is on a slight rise.
- Most library activity comes from Headquarters.

## Use by Headquarters - Third Quarter 2006 (Jul- Sept 06)

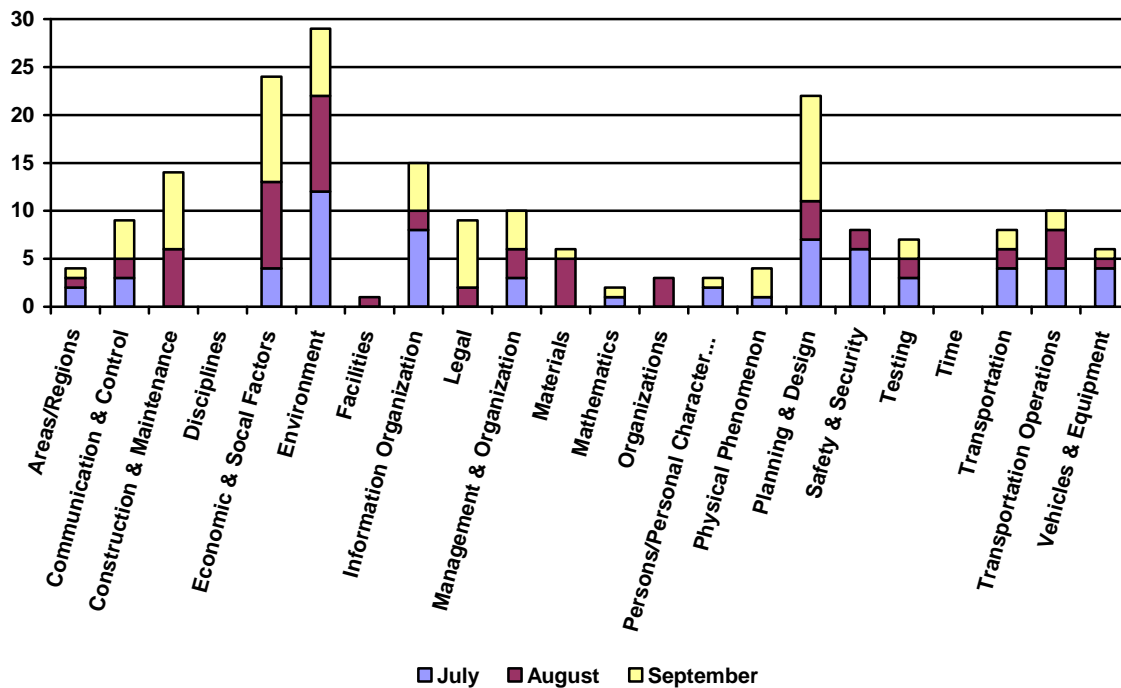


Within Headquarters:

- Library usage is broad based
- Heavier usage comes from the Environmental & Engineering Program, Strategic Planning & Programming, and Maintenance and Operations

### Areas of Inquiry 3rd Quarter 2006

- Questions asked were broken into broad categories based on the top-level terms of the Transportation Research Thesaurus (TRT).
  - The TRT is a controlled vocabulary developed jointly by the National Transportation Library and the Transportation Research Board, and gives us a standardized way to classify requests for information
- The 22 major areas of inquiry designated by TRT top terms are listed below the following graph.



- Areas of inquiry are useful in gauging areas where library collections and resources are needed.
- Large numbers of questions in particular areas suggest where greater emphasis be placed on developing library resources.