

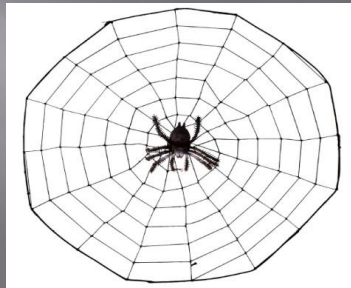


14 February 2013

Invisible Web Super Searcher

Jennifer Klang, Head, Reference Services, U.S. Department of Interior

INVISIBLE WEB SUPER SEARCHER

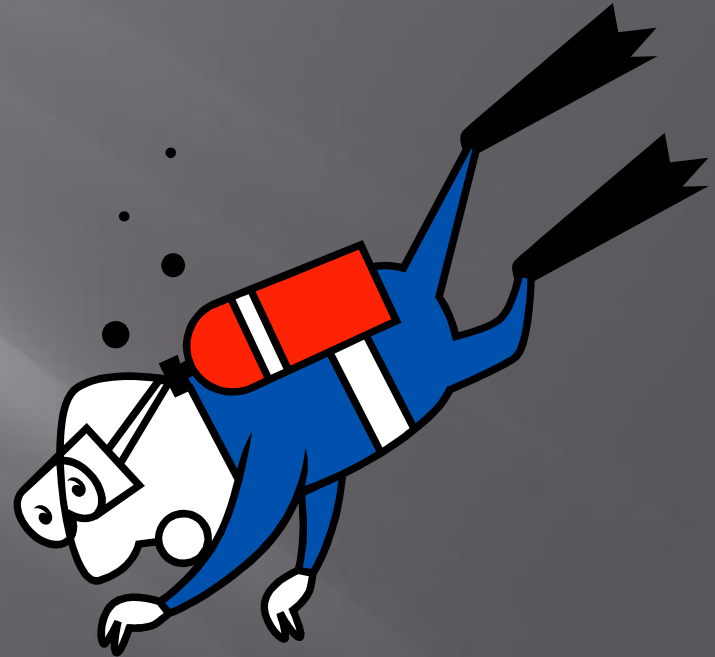


Super Searcher Hints For More Effective
Results

Jennifer Klang - Head of Reference Services

What Is It?

- Content that does not get indexed or queried by search engines and is not retrievable by current-generation search engines.
- Content that resides in searchable databases that produce dynamic results.



Examples

- Professional online services
- Databases within web sites
- Information that requires a password to retrieve
- Discussion forums and bulletin boards
- Sites or parts of sites that were unavailable when the search engine crawled them (may also be recently added)

More Examples...

- Pages or documents excluded due to search engine policy decisions
- Sites that reside on an intranet or behind a firewall
- Archives
- Many interactive tools
- Pages buried many levels down in a site
- Non-html format documents

Deep Web Is Useful When...

- Your normal search engines aren't cutting it
- You need an exact answer
- You need data/statistics
- High quality or authoritative results are needed
- You know the subject well
- You want more current information
- You want to browse collections of materials (images, etc.)

Should I Use a Search Engine?

- All-purpose tools.
- Best suited for taking paths where few other people had tread before
- Information that few people have dealt with before and is unlikely to be found in a directory
- Expect higher retrieval numbers

Should I Use a Directory/Portal?

- Directories are a good starting point for researching things that often been dealt with before.
- Directories yield less retrieved items / higher quality information.
- Portals are a good source for up-to-date information that changes too rapidly for search engines to keep up

When Should I Use Google?

- Use Google when you know exactly what you are looking for.
- When searching a term or word/phrase sequence that will appear on all results pages
- When there are not many often-used synonyms or alternative terms
- Dealing with information is public (not proprietary or confidential)

Strategies for IW Searches

- Use search engines to get to helpful sites
 - Environmental Policy AND database
 - Endangered Species AND database
- Look at Individual sites to see how they are arranged
- Look for statistical or topical lists
- Use the advanced search function to search for databases
- Follow Professional Pubs and listservs

Recommended Invisible Web Sites

- Google Scholar
- Science.gov
- Internet Archive
- OAIster (OCLC)
- Mamma.com
- Complete Planet
- Ipl.org
- InfoMine
- DeepDyve (S&T)
- Scirus (S&T)
- Hathi Trust

Federal Government Resources

- Science.gov - Interagency Initiative - 17 Government Science Orgs. & 13 Federal Agencies
- UScodeBeta.house.gov - New cite includes links and Pop. Names
- FDSYS
- Thomas.loc.gov
- USA.gov
- NTIS.gov