



10 September 2015

TRB: Looking to the Future

SPEAKER: Neil Pedersen, Executive Director, Transportation
Research Board



TRB: Looking to the Future



TRANSPORTATION RESEARCH BOARD

The National Academies of
SCIENCES • ENGINEERING • MEDICINE



TRB Today

**BRINGING THE TRANSPORTATION COMMUNITY
TOGETHER!**

- **Delivering Policy Analysis & Advice**
- **Managing Research Programs**
- **Providing Tools for Researchers & Practitioners**



TRANSPORTATION RESEARCH BOARD

The National Academies of
SCIENCES • ENGINEERING • MEDICINE

Bringing the Transportation Community Together

- Annual Meeting – 12,000 Attendees
- Conferences and Workshops – 50+ / 5,000+ Participants
- Committees and Panel Meetings – 6,500+ Participants
- Webinars – 25,000+ Participants
- State, University, and Transit Representatives – 250+ Organizations
- Staff Field Visits

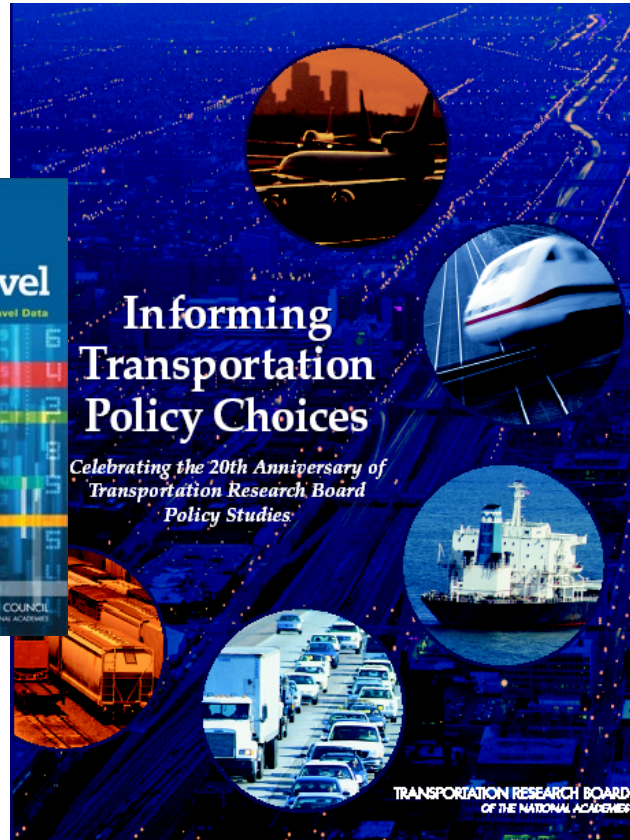
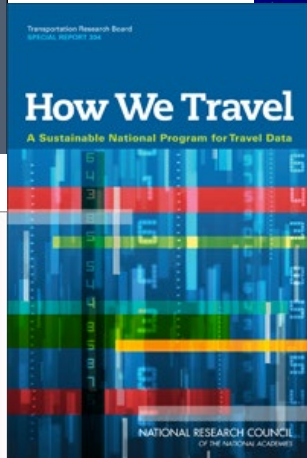
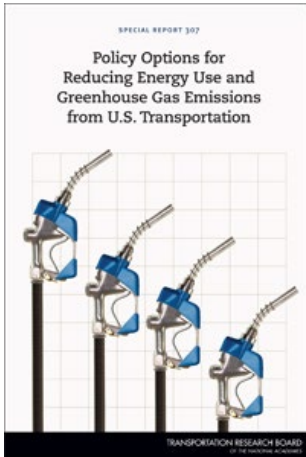
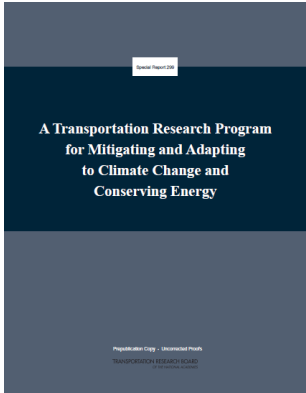


TRANSPORTATION RESEARCH BOARD

The National Academies of
SCIENCES • ENGINEERING • MEDICINE



Policy Analysis & Advice



TRANSPORTATION RESEARCH BOARD

The National Academies of
SCIENCES • ENGINEERING • MEDICINE



Research Management

Cooperative Research Programs

- **Highways**
- **Transit**
- **Airports**
- **Freight**
- **Hazardous Materials**
- **Rail**



TRANSPORTATION RESEARCH BOARD

www.TRB.org

Promoting Innovation and Progress in Transportation



Transportation practitioners, researchers, public officials, and other professionals need credible, high-quality information and research results to address the transportation challenges of the 21st century.

The Transportation Research Board engages professionals worldwide in a broad range of interdisciplinary, multimodal activities to lay the foundation for innovative transportation solutions. Join us!

Volunteer

Join / Support

Propose

Stay Informed

Browse Information By Mode



Aviation



Highway



Marine Transportation



Motor Carriers



Pedestrians and Bicyclists



Pipelines



Public Transportation



Rail

Browse Information By Topic

Design & Construction

<http://www.trb.org/Main/Home.aspx>

Operations & Preservation

[Maintenance & Preservation](#)

Policy & Organization

[Administration & Management](#)

Safety, System Components, and Users

[Freight Transportation](#)

Text Size: A⁺ | Share:

Recent Publications

[Strategies to Optimize Real Property Acquisition, Relocation Assistance, and Property Management Practices](#)

November 11, 2014

[TRB and Resilience: A Summary of Transportation Research Board Activities](#)

November 10, 2014

[TRB Security, Emergency Management, and Infrastructure Protection Research Status Report](#)

November 10, 2014

[TR News September – October 2014: Transportation in Tribal Lands: Challenges and](#)



TRANSPORTATION RESEARCH BOARD

The National Academies of
SCIENCES • ENGINEERING • MEDICINE

TRB NEWS

[2015 TRB 94th Annual Meeting and Transportation Research Record Call for Papers](#)

TRB standing committees have issued [calls for papers](#) for the TRB 94th Annual Meeting, January 11-15, 2015, in Washington, D.C, and the Transportation Research Record: Journal of the Transportation Research Board (TRR). While papers addressing any relevant aspect of transportation research will be considered, some committees are soliciting...

[TRB Webinar: Transportation Asset Management Implementation Tips and Tricks](#)

TRB will conduct a webinar on May 15, 2014, from 12:30pm to 2:00pm ET that will discuss various aspects of Transportation Asset Management (TAM) implementation at five state departments of transportation. Participants must register in advance of the webinar, and there is a fee for non-TRB Sponsor or non-TRB Sustaining Affiliate employees. A...

[TRB Webinar: Highlights from the "Tools and Technology Track" of the 10th National Transportation Asset Management Conference](#)

TRB will conduct a webinar on May 19, 2014, from 2:00pm to 3:30pm ET that will cover presentations on data issues, risk analysis tools, and information technology (IT) implementation that will be given at the 10th National Conference on Transportation Asset Management (TAM) in April 2014. Participants must register in advance of the webinar,...

[TRB Webinar: Peer to Peer: Detailed Looks at MAP-21 Asset Management Plan Pilot States](#)UPDATE YOUR INTERESTS

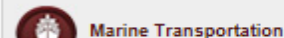
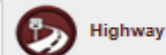
Remember you can [update your interests](#) at any time to help us deliver only the most relevant information to you each week.

[Update my interests](#)

CONNECT WITH TRB



BROWSE INFORMATION BY MODE ON TRB.ORG





Follow TRB on:



@TRBofNA #TRBAM



TRANSPORTATION RESEARCH BOARD

The National Academies of
SCIENCES • ENGINEERING • MEDICINE



TRB Research Databases



TRANSPORTATION RESEARCH BOARD

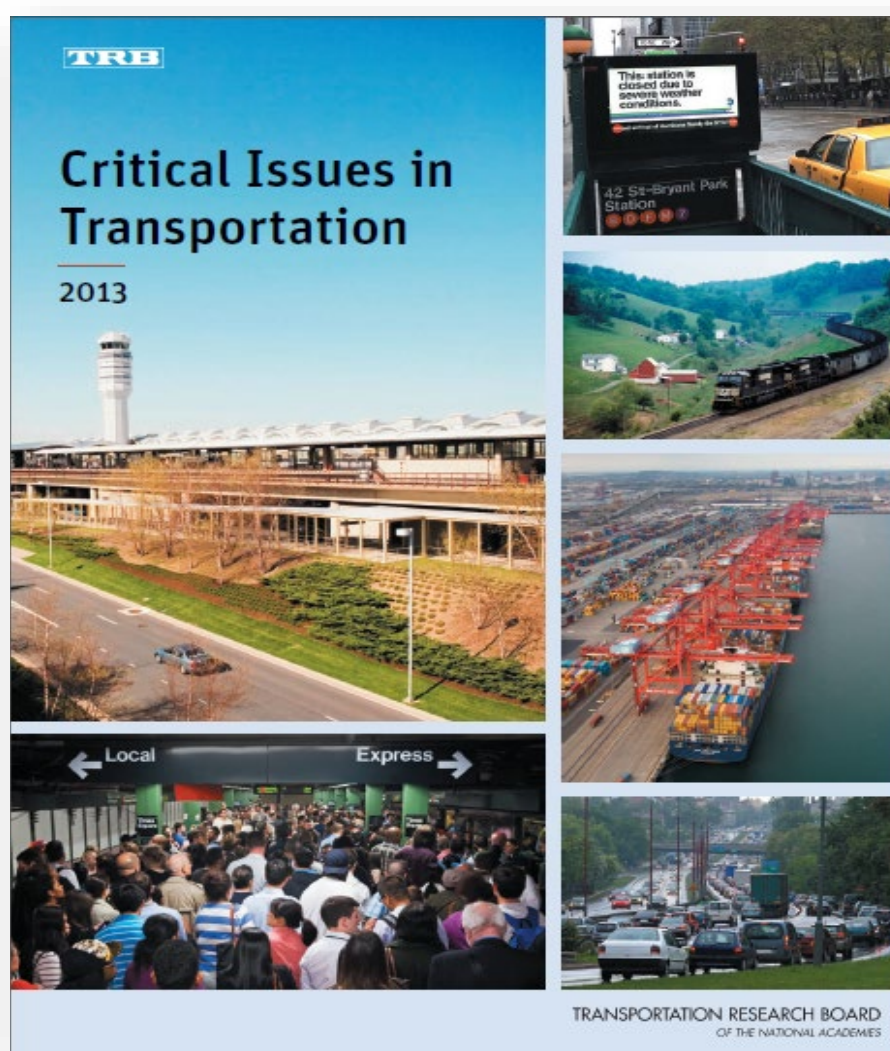
The National Academies of
SCIENCES • ENGINEERING • MEDICINE

TRB Strategic Plan

1. Address emerging and critical issues
2. Involve a broader cross section of stakeholders and constituencies
3. Review TRB's legacy programs and products
4. Evaluate impacts of TRB research programs
5. Augment traditional funding sources
6. Marketing and communications plan
7. Succession and IT planning



TRANSPORTATION RESEARCH BOARD



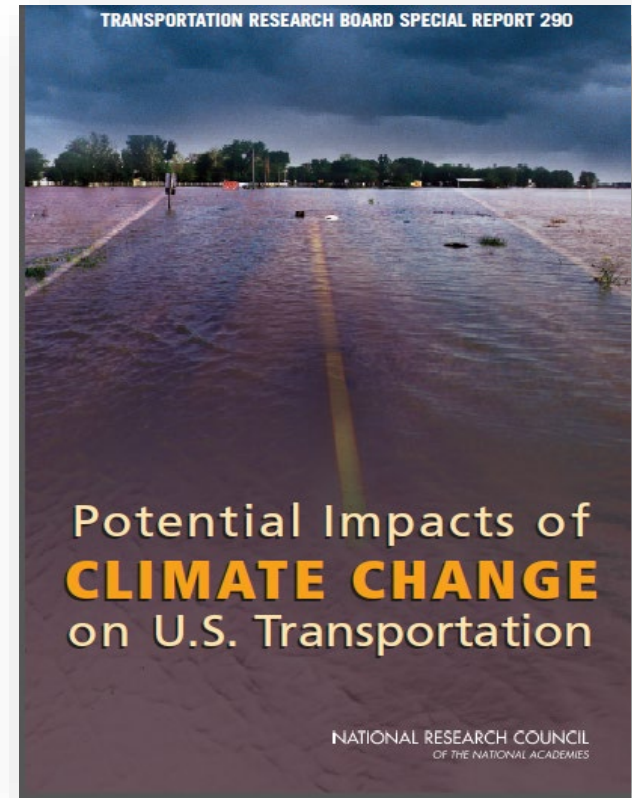
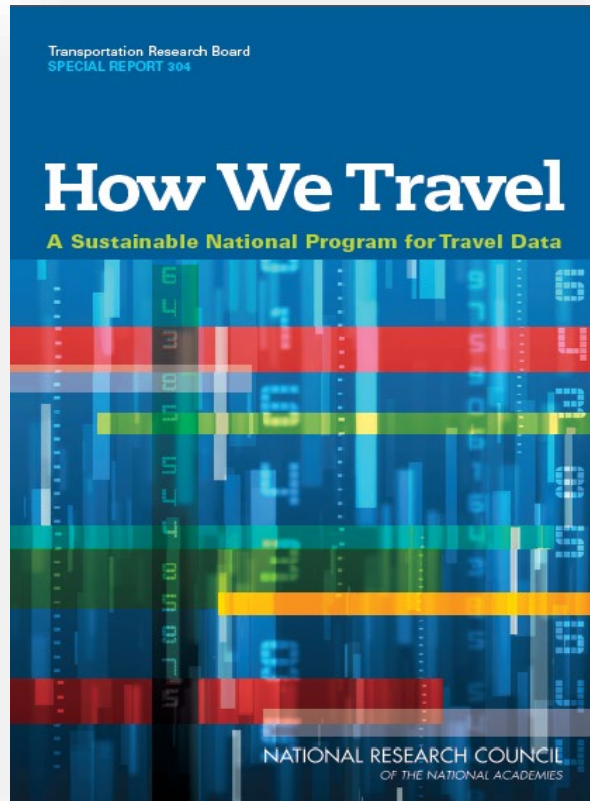
<http://onlinepubs.trb.org/Onlinepubs/general/criticalissues13.pdf>



TRANSPORTATION RESEARCH BOARD

The National Academies of
SCIENCES • ENGINEERING • MEDICINE

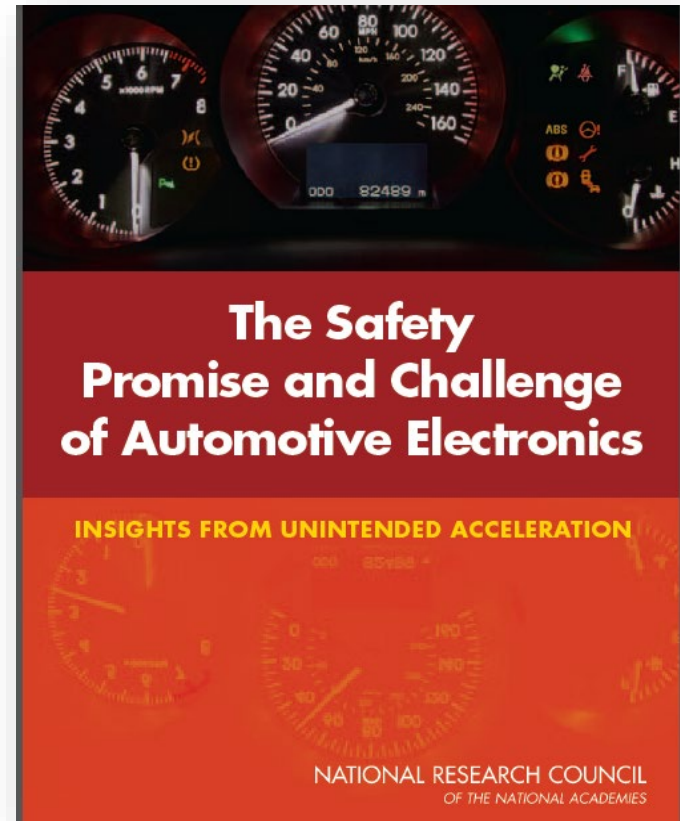
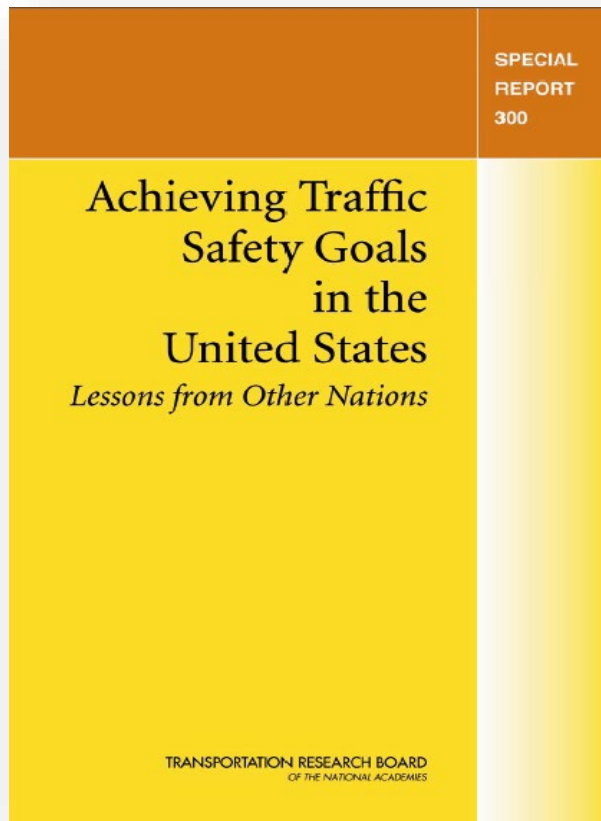
SYSTEM PERFORMANCE IS NEITHER RELIABLE NOR RESILIENT



TRANSPORTATION RESEARCH BOARD

The National Academies of
SCIENCES • ENGINEERING • MEDICINE

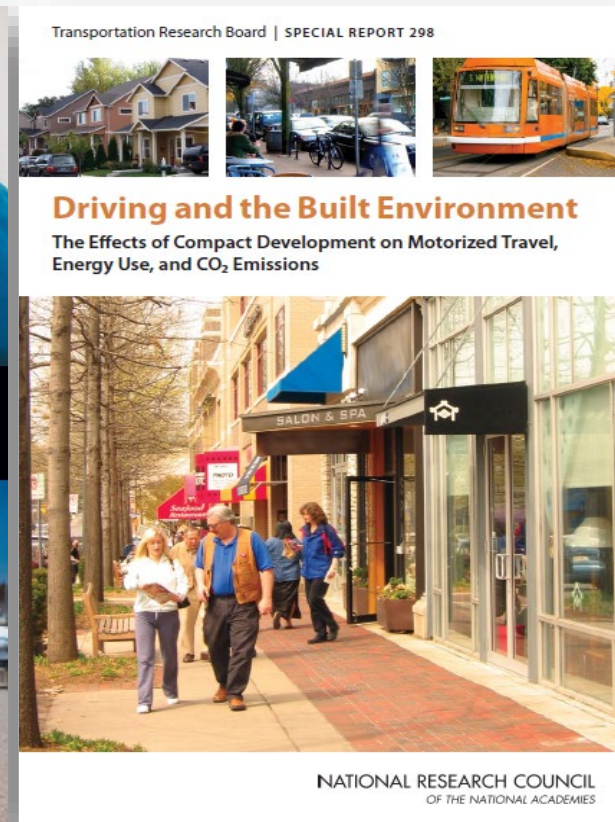
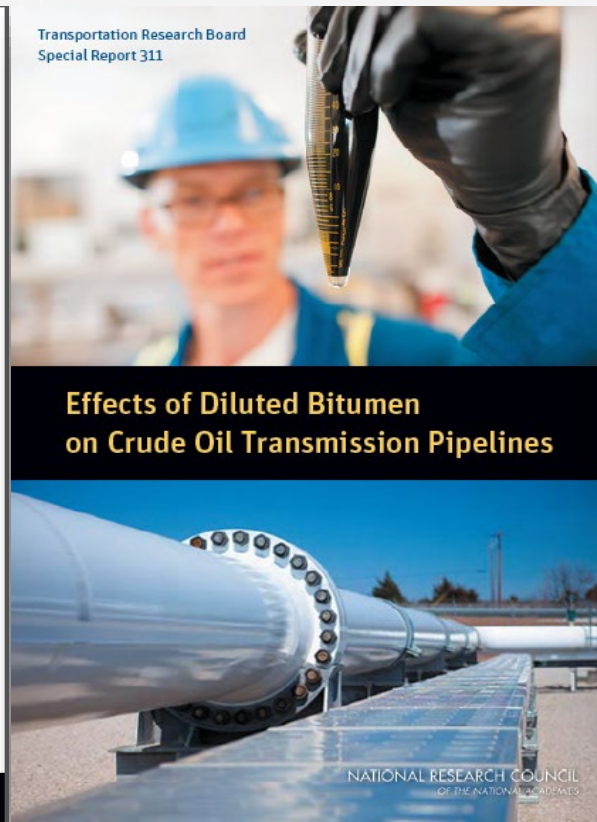
SAFETY HAS IMPROVED, BUT AVOIDABLE LOSSES ARE STILL SIGNIFICANT



TRANSPORTATION RESEARCH BOARD

The National Academies of
SCIENCES • ENGINEERING • MEDICINE

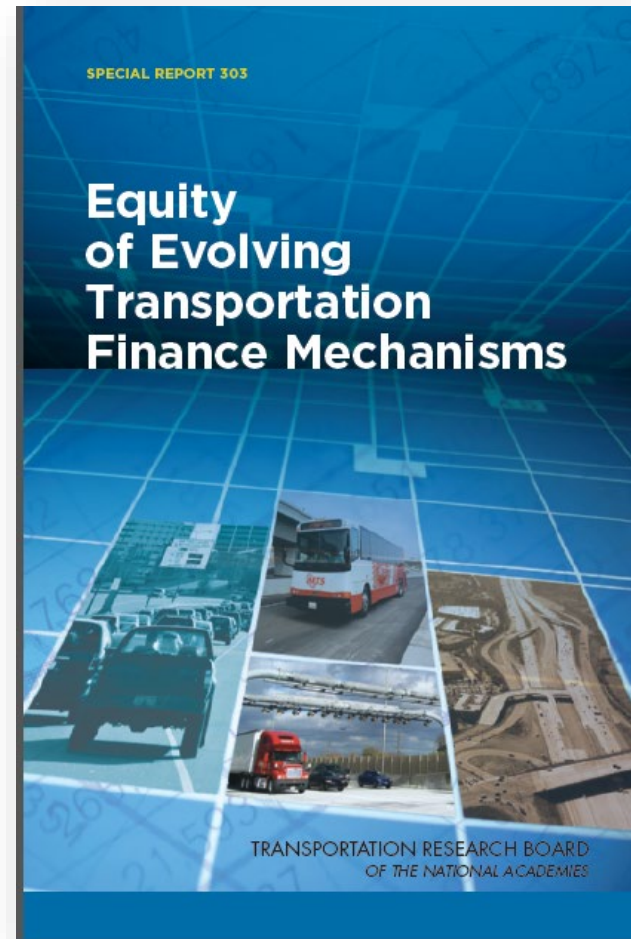
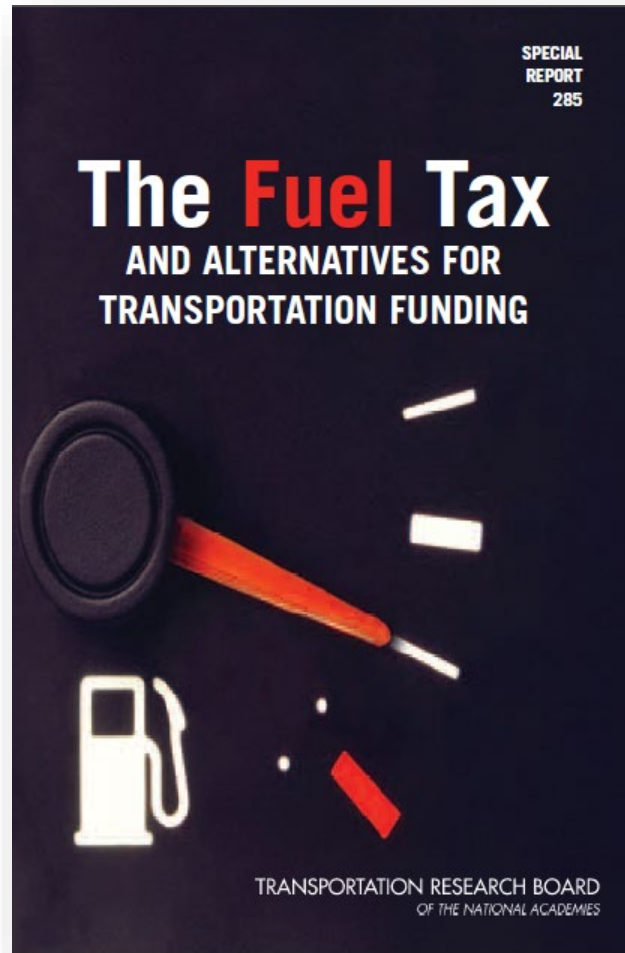
THE IMPACTS ON ENERGY, CLIMATE, AND THE ENVIRONMENT ARE UNSUSTAINABLE



TRANSPORTATION RESEARCH BOARD

The National Academies of
SCIENCES • ENGINEERING • MEDICINE

FUNDING SOURCES FOR PUBLIC INFRASTRUCTURE ARE INADEQUATE

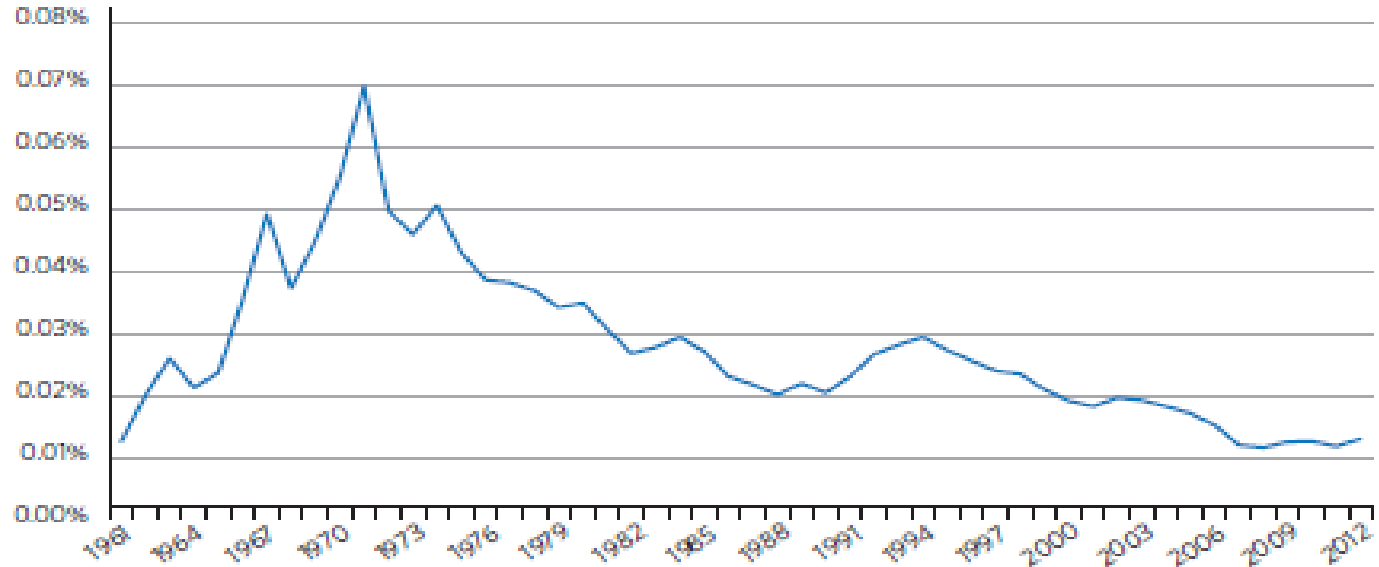


TRANSPORTATION RESEARCH BOARD

The National Academies of
SCIENCES • ENGINEERING • MEDICINE

INNOVATION LAGS—AND R&D INVESTMENT IS LOW AND DECLINING

TRANSPORTATION RESEARCH AND DEVELOPMENT AS A PERCENTAGE OF GROSS DOMESTIC PRODUCT, 1961–2012



TRANSPORTATION RESEARCH BOARD

The National Academies of
SCIENCES • ENGINEERING • MEDICINE