



27 October 2016

*Understanding DOIs (part 2)*

*Joan Starr, EZID Service Manager, California Digital Library*

# **EZID** IDENTIFIERS MADE EASY

[ezid.cdlib.org](http://ezid.cdlib.org)

# *What is an identifier?*

**doi:10.9999/FK40K2GTV**

**ark:/99999/fk8kw57h5d**

*What you see:* alphanumeric string (never changes)

*Associated with:* location of object (such as a URL)

*Required for DOIs:* who, what, when, etc (i.e. metadata)

# *Why bother?*





## The page cannot be found

The page you are looking for might have been removed, had its name changed, or is temporarily unavailable.

---

Please try the following:

- If you typed the page address in the Address bar, make sure that it is spelled correctly.
- Open the [httpd.apache.org](http://httpd.apache.org) home page, and then look for links to the information you want.
- Click the  [Back](#) button to try another link.
- Click  [Search](#) to look for information on the Internet.

HTTP 404 - File not found  
Internet Explorer

# EZID IDENTIFIERS MADE EASY

## DOIs

## ARKs

Strict metadata requirements	Flexible metadata guidelines
From the scholarly communication community	From the archives and museums community
Established “brand name”	Option-rich, open source
Use case: Data Citation	Use case: Data Documentation

# **ARKs and DOIs in data management plans**



# ARKS: Data Documentation

## What it looks like:

At top-level directory/folder:

Project Title

Unique Identifier

Date (yyyy or yyyy.mm.dd)

At sub-directories:

optional identifiers at granular levels

## Sample plan language:

[Team] follows the recommended best practice for good data management by assigning unique identifiers (ARKs) to the data as part of the data documentation.

## Why it's important:

### Researcher benefits:

Data documentation helps *you* keep track of (and remember) aspects of your data throughout the research project.

# DOIs: Data Citation

## What it looks like:

Aguilée R, Lambert A, Claessen D (2011)  
Data from: Ecological speciation in dynamic  
landscapes. *Journal of Evolutionary  
Biology* doi:10.5061/dryad.74024

## Why it's important:

**OSTP mandate** to: identify and provide  
“appropriate attribution to scientific  
data sets”

**Researcher benefits:** Credit, increased  
citations, increased productivity

## Sample plan language:

Publication of data shall occur during the project, if appropriate, or at the end of the project, consistent with normal scientific practices.

[Team] follows a standardized data product citation including DOI, that indicates the version and how to obtain a copy of that product.



# Working with DOIs in EZID





# IDENTIFY

**1. Assign a DOI.**

## Create a Simple Demo Identifier

Simple  Advanced

**1** Choose an identifier type ?

ARK (ark:/99999/fk4/...)

DOI (doi:10.5072/FK2/...)

**2** Describe the identified object

Location (URL)

Creator (Required)

Title (Required)

Publisher (Required)

Publication year (Required)

Resource type

**CREATE** **NOTE:** This is just a demo. To create a real identifier, [request an account](#).

*Clicking "Create" will create the identifier and make it public. To defer making it public, use the Advanced form. Once created, an identifier cannot be renamed or deleted.*

**Quick Start Guide**

- [Simple ID Creation](#)

## Create a Simple Demo Identifier

Simple **Advanced**

**1** Choose an identifier type ?

ARK (ark:/99999/fk4/...)

DOI (doi:10.5072/FK2/...)

**2** Describe the identified object

Location (URL)

Creator (Required)

Title (Required)

Publisher (Required)

Publication year (Required)

Resource type

**CREATE** **NOTE:** This is just a demo. To create a real identifier, [request an account](#).

*Clicking "Create" will create the identifier and make it public. To defer making it public, use the Advanced form. Once created, an identifier cannot be renamed or deleted.*

**Quick Start Guide**

- [Simple ID Creation](#)

ezid.cdlib.org



**CITE**

**2. Use the DOI.**

Search



Home • Contact Us

Access old SpringerLink



» Download PDF (518 KB)

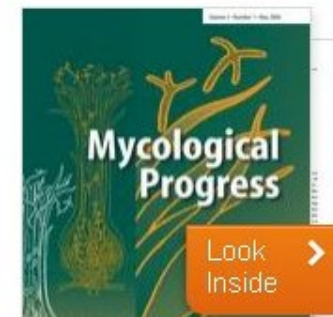


» View Article

Mycological Progress  
August 2012, Volume 11, Issue 3, pp 827-833

# *Lepidostroma vilgalysii*, a new basidiolichen from the New World

Brendan P. Hodkinson, Jessie K. Uehling, Matthew E. Smith



Abs

The lic  
morph  
Lepido  
an inv  
from th

Hodkinson BP, Lendemer JC, Esslinger TL (2010) *Parmelia barrenoae*, a macrolichen new to North America and Africa. North American F 5(3):1–5

Hodkinson BP, Uehling JK, Smith ME (2011) Data from: *Lepidostroma vilgalysii*, a new basidiolichen from the New World. Dryad Digital Re doi:[10.5061/dryad.j1g5dh23](https://doi.org/10.5061/dryad.j1g5dh23)

Honegger R (1996) Mycobionts. In: Nash TH III (ed) The biology of lichens. Cambridge University Press, Cambridge, pp 25–36

*Lepidostroma* and to evaluate the molecular distinctiveness of the species from all other described species in the family and genus.

## Within this Article

- » Introduction
- » Materials and methods
- » Results
- » The new species
- » Discussion
- » References

A person wearing a straw hat and using binoculars to look at a vast, hazy mountain landscape. The person is partially obscured by green foliage in the foreground. The background shows rolling hills and mountains under a bright sky.

**TRACK**

**3. Track the DOI's use.**



## DataCite Profiles

### Home

Please register with **DataCite Profiles** for DataCite services that require authentication. You register by signing in via your **ORCID** profile. Other services will be added over time. [profiles.datacite.org](https://profiles.datacite.org)

### Adding Works to ORCID [orcid.org](https://orcid.org)

By signing in with ORCID you enabled DataCite to add your works to your ORCID record via the **Auto-Update** and **Search and Link**.



**Search and Link.** Add works you find via [DataCite Search](#) to your ORCID record. [search.datacite.org](https://search.datacite.org)



**Auto-update.** Have works in the [DataCite Metadata Store](#) with your ORCID identifier automatically added to your ORCID record.



# AUTOMATE

A PR2 robot is the central focus, positioned in front of a whiteboard filled with handwritten mathematical equations and diagrams. The robot is white with blue accents and has 'PR2' printed on its chest. To the left, another robot arm is visible, reaching towards the PR2. The background is a whiteboard with various mathematical notations, including 'Group', 'Zorn's Lemma', and 'eval. funct'.

**4. Make assigning DOIs automatic.**

## Open Source Software for EZID

[Home](#) / [Learn](#) / [Documentation](#) / [Open Source Software for EZID](#)

**IMPORTANT:** The software listed below is not endorsed or supported by the EZID Team. It is listed here solely as a courtesy. If you are the author of a resource listed here and you wish us to remove it, please [contact us](#). If you are the author of software that you wish to be listed, please [contact us](#).

- [Java code library](#) ↗
- [EZID services for Hydra](#) ↗ applications
- [C# Library for working with the EZID API](#) ↗
- [Using EZID with DSpace](#) ↗
- [Ruby client for EZID](#) ↗

## The EZID API, Version 2

[Home](#) / [Learn](#) / [API Guide](#)

**This version:** <http://ezid.cdlib.org/doc/apidoc.2.html>

**Latest version:** <http://ezid.cdlib.org/doc/apidoc.html>

**Previous version:** <http://ezid.cdlib.org/doc/apidoc.1.html>

EZID (easy-eye-dee) provides an easy way to obtain, describe, and manage long-term identifiers for digital objects. It can be accessed via a web User Interface (UI) and a web Application Programming Interface (API). A few account management functions can be accessed from the UI only, but otherwise all of EZID's functionality is available through the API. This document describes Version 2 of the EZID API.

Please send mail to the EZID discussion list (open to EZID customers only) to ask questions or report problems:


[ezid-l@listserv.ucop.edu](mailto:ezid-l@listserv.ucop.edu)

### Contents

---

- [Framework](#)
- [API vs. UI](#)
- [Authentication](#)
- [Request & response bodies](#)
- [Error handling](#)
- [Operation: get identifier metadata](#)
- [Operation: create identifier](#)
- [Operation: mint identifier](#)
- [Operation: modify identifier](#)
- [Operation: delete identifier](#)
- [Ownership model](#)
- [Shadow ARKs](#)
- [Identifier status](#)
- [Internal metadata](#)
- [Metadata profiles](#)

To try it:  
username: **apitest**  
pword: **apitest**



**Many researchers  
have chosen EZID.**

A close-up photograph of a person's open palm holding about a dozen peanuts. The peanuts are light brown and have their characteristic bumpy, wrinkled texture. The background is a large, out-of-focus pile of similar peanuts, creating a sense of abundance. The lighting is bright, casting soft shadows on the hand and the peanuts.

**Low cost**

**Easy to use**



**Flexible**





**Big community  
of users**

# Persistent citations

Gaurav Sood Dataverse

<http://www.gsood.com>

Harvard Dataverse > Gaurav Sood Dataverse > **Geographic Information on Designated Media Markets**

 Metrics

15 Downloads



## Geographic Information on Designated Media Markets

Sood, Gaurav, 2016, "Geographic Information on Designated Media Markets", doi:[10.7910/DVN/IVXEHT](https://doi.org/10.7910/DVN/IVXEHT), Harvard Dataverse, V3 [UNF:6:Oo/19WyCo5AWrBHg3eaGoQ==]

 Cite Data ▾

 [Learn about Data Citation Standards.](#)

### Description

Contains:

1. Crosswalk between DMAs, County, State and Zip Codes
2. Shape Files for DMAs from 1995 and 2008
3. Crosswalk between DMAs and County + County TV HH



# **EZID** IDENTIFIERS MADE EASY

**CONTACT**

**ezid@ucop.edu**

**TWEET**

**@ezidCDL**

**VISIT**

**ezid.cdlib.org**