

# National Transportation Library End-of-Year Update

Featuring Staff of the National Transportation Library

2020-12-10



U.S. Department of Transportation  
**Office of the Secretary of Transportation**  
Bureau of Transportation Statistics

# Presentations

Introduction to our new Managing Director

David Gansz [Managing Director]

New Reference Services

Vicki Milam & Charlotte Gavin [Reference Team]

Data Management Update

Jesse Long [Data Management Fellow]

DOT HQ Library Transition Project

Mary Moulton [Digital Librarian]





**U.S. Department of Transportation**  
Office of the Assistant Secretary for Research and Technology

# **Bureau of Transportation Statistics**

## **National Transportation Library (NTL)**

David Gansz, Director

December 10, 2020





## David Gansz

Librarian, Information Scientist, Researcher, Scholar

Washington DC-Baltimore Area · 500+ connections



U.S. Department of  
Transportation



### Director, National Transportation Library

U.S. Department of Transportation

2020 -



### Dean, Library and Learning Center Services, National Defense University

United States Department of Defense

2017 - 2020 · 3 years



### Dean, Libraries and Information Sciences

Shepherd University

2015 - 2017 · 2 years



### Vice President, Information Technology

Edison State Community College

2005 - 2015 · 10 years



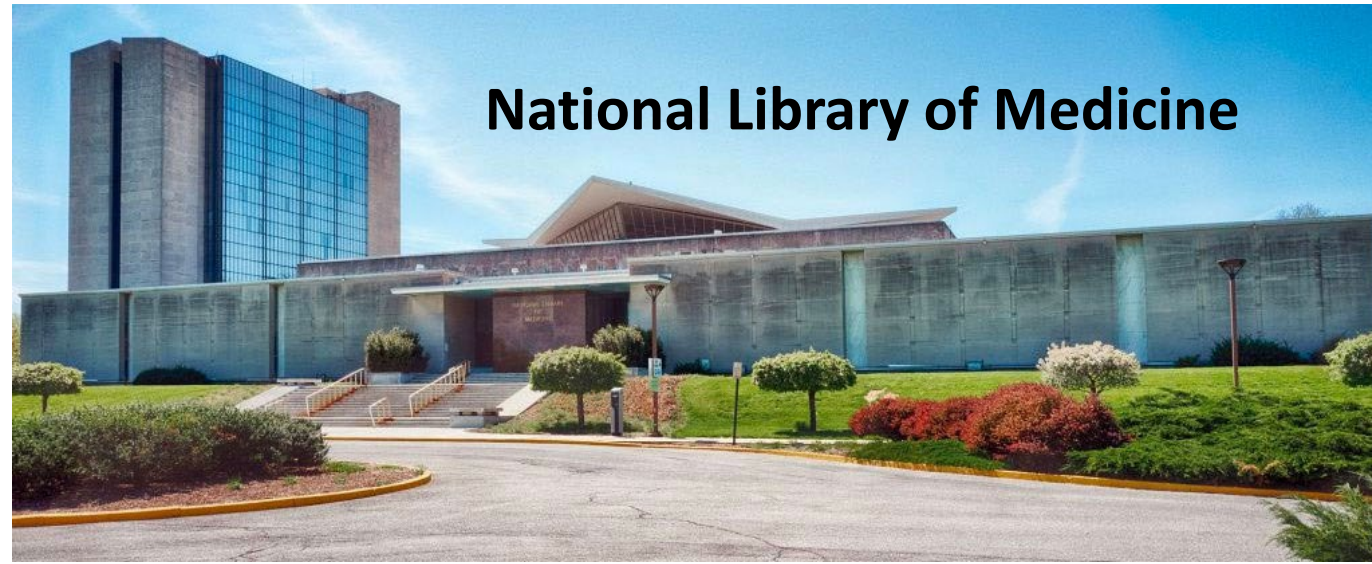
### Director of the Library

Wilmington College

2001 - 2005 · 4 years

# Four National Libraries

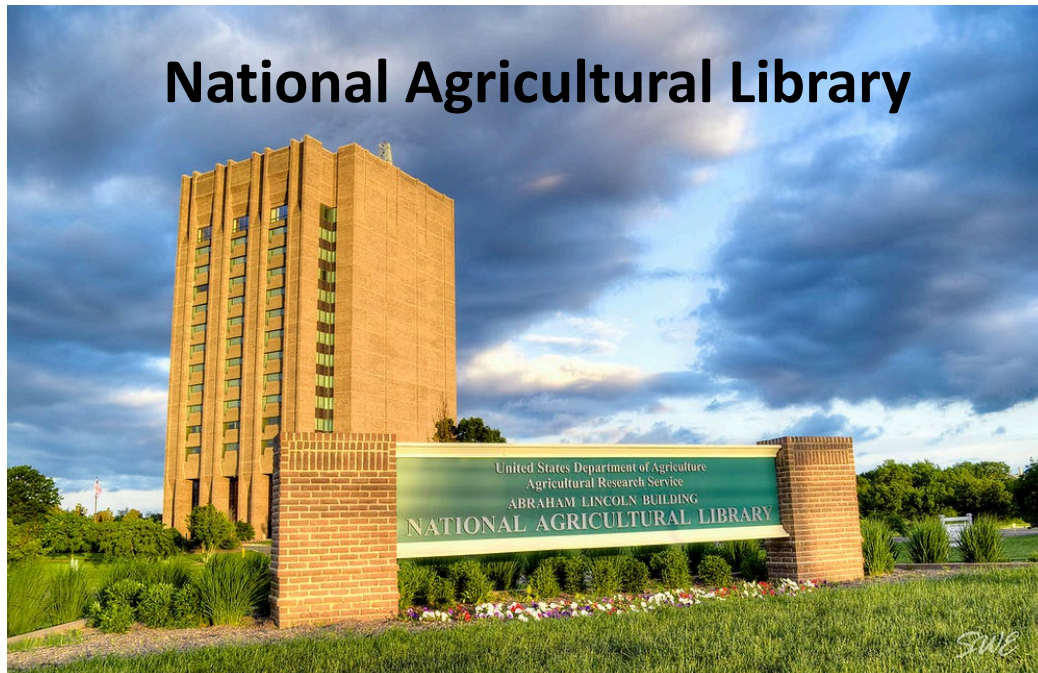
## National Library of Medicine



## National Library of Education



## National Agricultural Library





**National  
Transportation  
Library**

# **49 USC §6304, 2012**

**Moving Ahead for Progress in the 21st Century (MAP-21)**

**“There is established...a National Transportation Library which shall...**

**...acquire, preserve, and manage transportation information...products and services...**

**The Director shall publicize, facilitate, and promote access to the information products and services.”**

# Information Products

United States Department of Transportation

Bureau of Transportation Statistics

## National Transportation Library

[Home](#) [Collections](#) [Recent Additions](#) [Public Access](#) [Submit Content](#)

[About ROSA P](#) ▾



All Collections ▾

Enter keyword or phrase...

Search

[Advanced Search](#)



**Transportation Statistics Annual Report 2019**



Pocket Guide to Transportation 2019



Port Performance Freight Statistics in 2018



Transportation Economic Trends 2018



Blockchain for Unmanned Aircraft

A large, high-angle aerial photograph of a highway interchange, serving as the background for the main content area. It includes left and right navigation arrows on the sides.

**Transportation Statistics Annual Report 2019**

Latest available data collected and compiled by BTS, describes the Nation's transportation system, performance and trends



# Information Services



# Outreach/Marketing/Promotion

**“...publicize, facilitate, and promote access to the information products and services...”**



# Transportation Librarians Roundtable

## National Transportation Library

[National Transportation Library](#) / [LibGuides](#) / [NTKN](#) / [Transportation Librarians Roundtable](#) / [Home](#)

### Transportation Librarians Roundtable

Home

TLR Archive

### Welcome to the Transportation Librarians Roundtable!

The Transportation Librarians Roundtable (TLR), a monthly web conference series, is an initiative of the National Transportation Library (NTL), co-sponsored by the American Association of State Highway and Transportation Officials (AASHTO), Transportation Research Board (TRB), and the Special Libraries Association's Transportation Division.



Please join us for our next TLR on Thursday, September 10, at 2pm EST

**Reflections on 50 Years of the Volpe Center**

**Presenter: Susan Dresley**

This month's Transportation Librarians Roundtable features speaker Susan Dresley, Librarian at the US DOT Volpe Center's Technical Resource Center (TRC) and a valued member of our transportation librarians community. This year marks the 50<sup>th</sup> anniversary of the Volpe Center, and Sue will highlight Volpe's work, as well as the evolving role and contributions of the TRC. This is a not-to-miss presentation for anyone interested in government information, special and technical libraries, and research services.

We hope to see you then!

Minnesota Department of Transportation

## 2013 MnDOT Library Valuation/Return On Investment (ROI) Study Findings

As we worked through the process of determining the library's value to MnDOT, it became apparent that the library produces two types of ROI: tangible and intangible. The *Tangible ROI* was calculated from dollars and time saved, and indicated that for every \$1.00 spent on library staff and materials, \$1.90 in benefits were returned to MnDOT.

*Intangible ROI* refers to things we cannot measure, such as the value library-supplied standards and specifications bring to MnDOT's construction projects, or, what is the value of knowledge gained through the reading of materials supplied by the library to MnDOT's projects, initiatives, and decision-making. Based on customer feedback, the Intangible Value returned to MnDOT is significant.

Sheila Hatchell, Library Director

Email: [Sheila.hatchell@state.mn.us](mailto:Sheila.hatchell@state.mn.us)

# Lib-Value: Values, Outcomes, and Return on Investment of Academic Libraries, Phase III: ROI of the Syracuse University Library

Bruce Kingma and Kathleen McClure

This study measures the return on investment (ROI) of the Syracuse University library. Faculty and students at Syracuse University were surveyed using contingent valuation methodology to measure their willingness to pay in time and money for the services of the academic library. Their travel time and use of the online library was measured to determine the environmental value of the academic library. The economic and environmental value of the Syracuse University library show an ROI of \$4.49 returned to the university for every \$1.00 spent each year.

# Information is Performative *and* Transformative

- Librarians are the quintessential change-agents in the transformative process that potentially takes place in the knowledge management environment.
  - Librarians' services cannot be assigned transactional "value."
- The intangible ROI of our service provisioning will always contain an important anecdotal element that remains unquantifiable.
- Our storytelling will continue to be a demonstrable element of our "worth."

# Questions?

[David.Gansz@DOT.Gov](mailto:David.Gansz@DOT.Gov)



“Your mileage may vary.”

# NTL Reference Services

Libchat & Interlibrary Loans

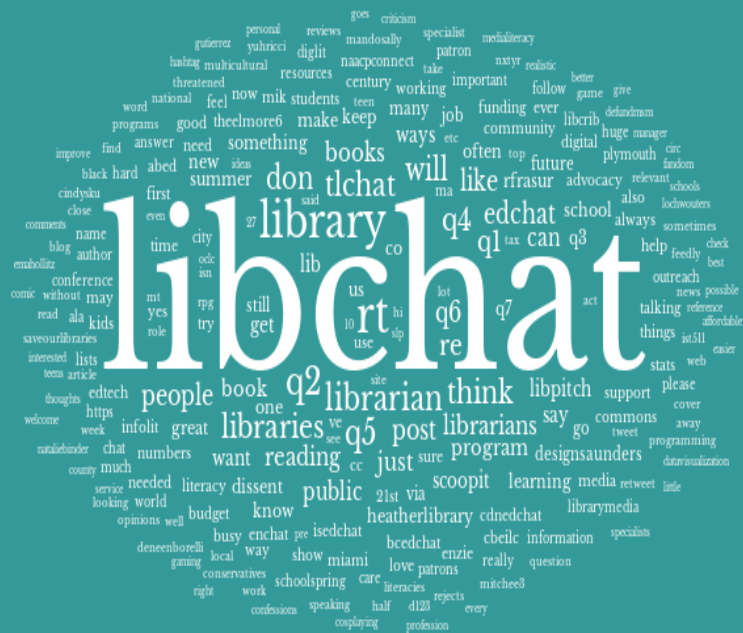
Victoria Milam & Charlotte Gavin  
Further Information



U.S. Department of Transportation  
**Office of the Secretary of Transportation**  
Bureau of Transportation Statistics



# National Transportation Library LibChat



- LibAnswers
- LibChat



# ILLs and Document Delivery

- NTL has begun doing electronic document delivery for DOT staff, and this has been working well
- We use WorldCat for the ILL interface
- eSubscriptions include Hein online, CQ Almanac, Proquest, National Journal (OCLC, Dunn&Bradstreet, and Pacer are coming)



# NTL Data Services Update

Jesse Long & Leighton Christiansen

2020-12-10



U.S. Department of Transportation  
**Office of the Secretary of Transportation**  
Bureau of Transportation Statistics

# New Collection! NTAD Collection for GIS data

- Partnership with GIS Team on the implementation of data management best practices and improved documentation
  - DMPs and READMEs
- Current work on NTAD Collection and Historical Datasets
  - Ports 1995-2015
  - Rail 1995-2015
  - More to come



## National Transportation Atlas Database (NTAD) Archive

These datasets include spatial information for transportation modal networks and intermodal terminals, as well as the related attribute information for these features. Users can interact with the data on <https://data-usdot.opendata.arcgis.com/>

### Search Results

1 - 20 of 23 results

20 50 results

Sort By: Relevance

Select Docs for  
Citation Export

« Previous 1 2 Next »

#### Narrow Results:

##### Resource Type

Dataset (23)

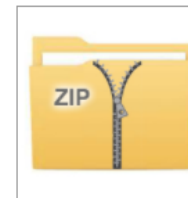
##### Keywords

Cargo facilities (1)

Commercial facilities (1)

Data (2)

Databases (21)



#### National Transportation Atlas Databases: 2014

**Published Date:** 2014-01-01

**Abstract:**

The National Transportation Atlas Databases 2014 (NTAD2014) is a set of nationwide geographic datasets of transportation facilities, transportation networks, associated infrastructure, and other political and administrative entities. These datasets i...

**File Type:**

 [ZIP - 1.70 GB]



#### National Transportation Atlas Databases: 2015

**Published Date:** 2015-01-01

**Abstract:**

The National Transportation Atlas Databases 2015 (NTAD2015) is a set of nationwide geographic datasets of transportation facilities, transportation networks, associated infrastructure, and other political and administrative entities. These datasets i...

**File Type:**

 [ZIP - 1.89 GB]

# National Census for Ferry Operators (NCFO)

- DMP
- DOIs assigned to visualizations and datasets
- Development of Socrata Stories Preservation Packages

New: 2018 NCFO Data

Old: 2016 NCFO Data



## 2016 Highlights of Ferry Operations in the United States

**Published Date:** 2017-10-01

**Abstract:** This publication highlights data collected by the 2016 NCFO. The Bureau of Transportation Statistics (BTS) conducted the NCFO from April through November 2016, collecting the operational characteristics of the 2015 calendar year ferry operations. Bas...

**File Type:** [PDF - 3.61 MB]



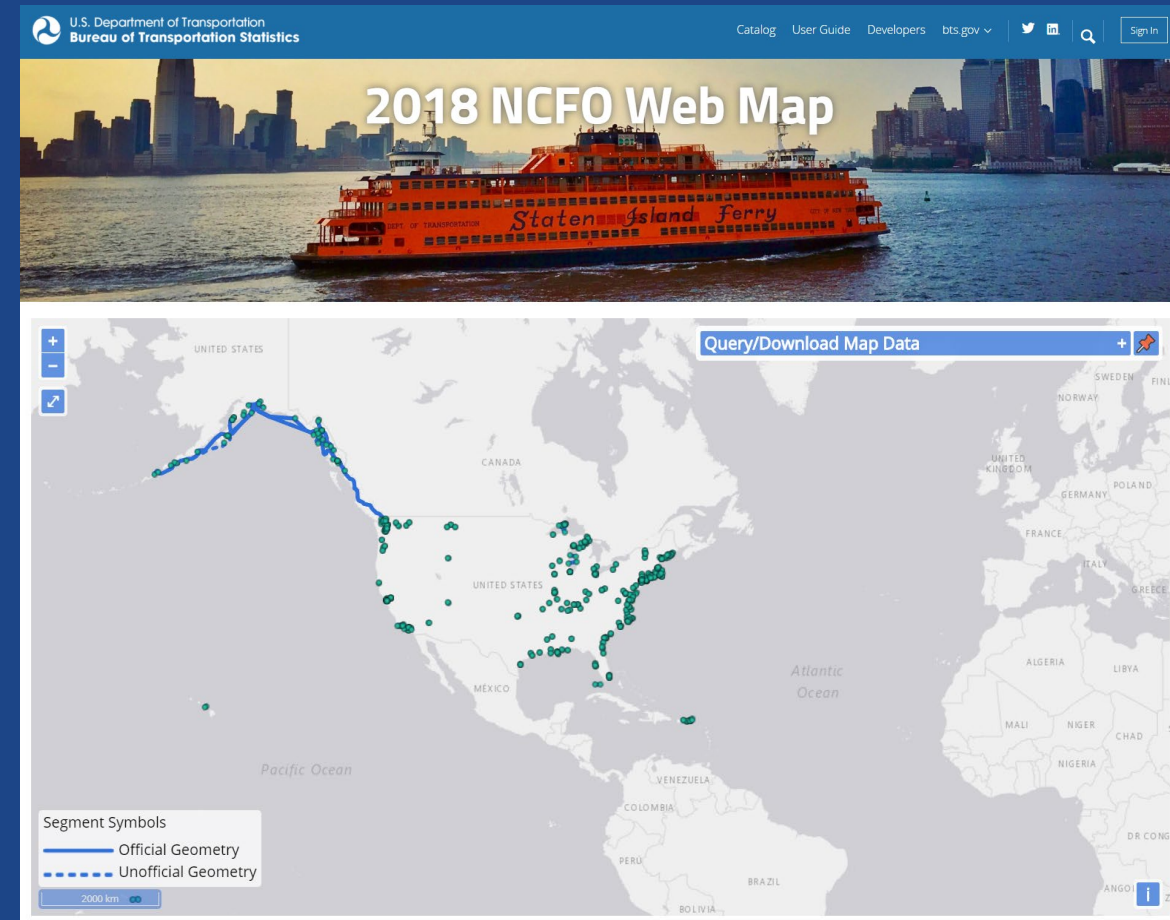
## 2016 National Census of Ferry Operators [supporting datasets]

**Published Date:** 2018-03-06

**Abstract:** The Bureau of Transportation Statistics (BTS) conducted the National Census of Ferry Operators (NCFO) from April through November 2016, collecting the operational characteristics of the 2015 calendar year ferry operations. The supporting zip file cont...

**File Type:** [PDF - 310.05 KB]

<https://rosap.ntl.bts.gov/view/dot/35537>



Other Great Data & Stats from BTS

# Other Great Data & Stats from BTS

**The following datasets are being managed and are being updated, if and as appropriate:**

1. Border Crossing and Entry Data
2. [National Census of Ferry Operators](#)
3. [State Transportation Statistics](#)
4. TransBorder Freight
5. [Port Performance Freight Statistics](#)
6. [American Travel Survey 1995](#)
7. [National Transportation Atlas Database \(NTAD\)](#)
8. [Census Transportation Planning Package](#)
9. [Commodity Flow Survey](#)
10. [Government Financial Transportation Statistics](#)
11. Tank Car
12. Transportation Satellite Account
13. [Omnibus Household Survey](#)
14. [Vehicle Inventory and Use Survey \(VIUS\) 2002](#)
  - Working with future collection team
  - Working to get past documentation to move through the 1990s and back

# Public Access & Federal Efforts



# U.S. DOT Public Access Policy Update

**Plan to Increase Public Access to the  
Results of Federally-Funded  
Scientific Research Results**

Version 1.1



**December 16, 2015**

**U.S. Department of Transportation**

## **U.S. DOT PA Plan Update**

- December 15, 2015: Time for a review
- New Policy and Laws
- Include Lessons Learned
- Currently in Drafting stage; hoping for Approval in early 2021
- Update of DOT Public Access Plan Guidance Website: <https://ntl.bts.gov/public-access>
- Still not completely socialized inside and outside DOT

# OSTP Subcommittee on Open Science Workplan 2020



## SOS Strategic Objectives

1. Increase the impact and benefit from federally funded scientific research products by making them more accessible to the public, machine-readable, and aligned with FAIR (findable, accessible, interoperable, and reusable) principles.
2. Assess opportunities to increase access to scientific research products while managing associated risks.
3. Collaborate with academia, research communities, and industry to achieve open science objectives in ways that are efficient, effective, and advance national science and engineering priorities. Engage international partners to strengthen open science objectives.

## SOS Working Groups for 2020

- Data Management & Repositories
- Data Dictionary
- Persistent Identifiers
- Publications
- Access Risks
- Collaboration

<https://www.whitehouse.gov/ostp/>

# USDOT HQ Library Transition

Moving to virtual collections and services

Mary Moulton  
Transportation Librarians Roundtable  
10 December 2020



U.S. Department of Transportation  
**Office of the Secretary of Transportation**  
Bureau of Transportation Statistics

# National Transportation Library and USDOT HQ Library

2 separate libraries with a  
shared space from  
2008 to 2016



# Project Background

Beginning in March, 2020, NTL is conducted an assessment of the USDOT HQ Library's **services, materials, and resources**, for transfer to NTL by **October 1, 2020**.

## Areas to assess & transfer:

- Subscription services to research databases and e-journals
- ILS
- Interlibrary loan & document delivery
- Website
- Reference services
- Physical collections



# Advisory Team

- Mary Moulton, NTL
- Ed Strocko, NTL
- Xin Wang, NTL
- Samantha Strain, NTL
- David Jones, OGC
- Dawn Vanlandingham, FHWA
- Shana Baker, FHWA
- Lisa Shuler, FHWA
- Sue Dresley, Volpe
- Cassandra Allwell, Volpe



# Subscriptions and Services

# Subscription Services

HQ Library manages subscriptions for **e-journals and research databases**, accessible on the USDOT intranet to all employees.

## Transition Strategy:

- Evaluate usage statistics and costs for each service
- Identify new services
- For essential journals and research databases, explore shared services with FHWA Research Library and Volpe Technical Research Center





# Interlibrary Loan & Document Delivery

Interlibrary loan & digital document delivery services provide **access to materials not held locally**; an essential service for research organizations.

## Transition Strategy:

- Evaluate digital document delivery services
- Evaluate existing borrower service
- Evaluate academic library subscription services
- Continue with OCLC document delivery for FY21



# Website Integration

HQ Library maintains a **public webpage** detailing library information, and serving as a landing page for **accessing subscription services.**

## Transition Strategy:

- Migrate subscriptions and interlibrary loan / document delivery form to internal Sharepoint site
- Capture service metrics for USDOT modes



# Reference Services

The HQ Library is currently closed. There is **no professional reference service**. Phone and email are forwarded to NTL's Ask A Librarian service.

## Transition Strategy:

- NTL's Ask A Librarian service currently provides phone and chat reference services 8am-5pm, Mon-Fri. Email and FAQs are always available
- Refresh of services includes metrics of USDOT transactions
- Promote NTL services within USDOT HQ



# Library Platforms

The HQ Library currently maintains an **online catalog of the physical collection**, shared with Volpe center. Holdings **must be maintained** as digitization inventories.

## Transition Strategy:

- Review shared services options with Volpe Technical Research Center and FHWA Research Library
- Renew Integrated Library System for future use in creating inventories for digitization



# Collections

Digitization and donation



# Collection Digitization

## HQ Library holdings include:

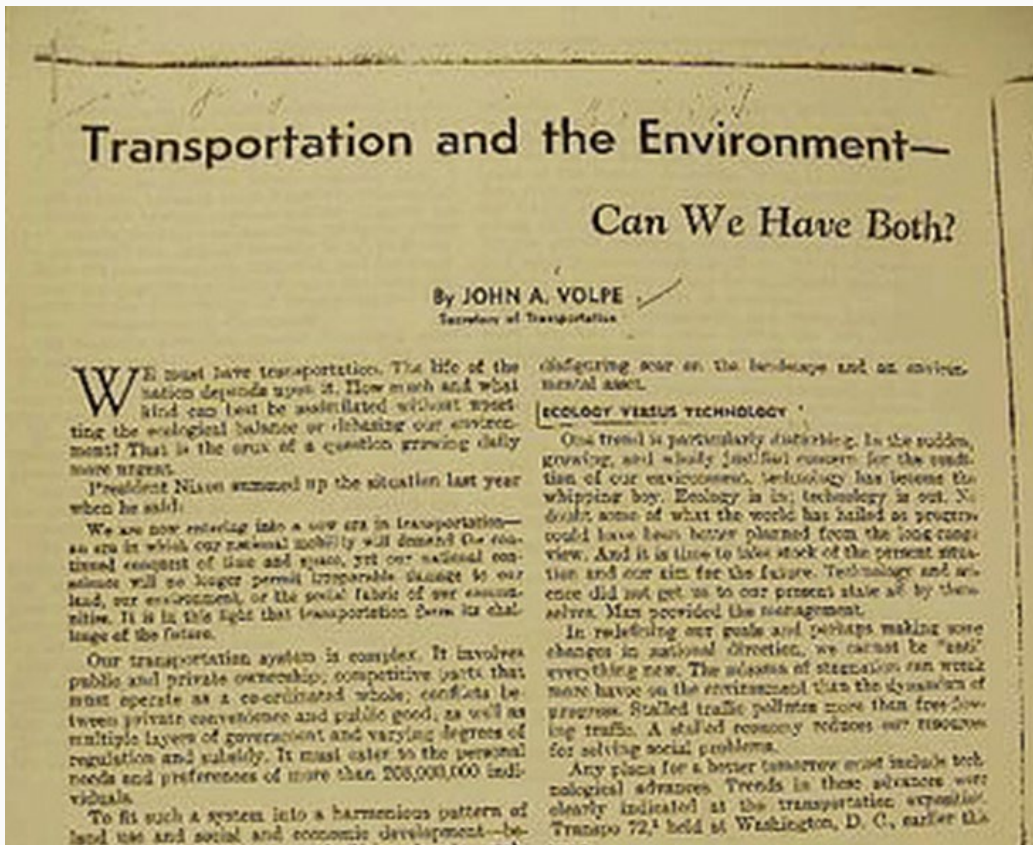
- US DOT serials, newsletters, directories (partially inventoried)
- Dale Grinder Collection (processed for digitization)
- Microfiche and reader
- Approximately 11,000 deaccessioned technical reports at the DOT warehouse in Landover

## Transition Strategy:

- Complete inventory of physical collection
- Select candidates for digital preservation
- Consult with Federal partners on donations



# Dale Grinder Collection



Speeches, articles,  
photographs,  
correspondence and  
ephemera

Collected by former USDOT  
historian

# Dale Grinder Collection



## Photograph Preservation

18 original photographs of former Secretaries of Transportation in protective polyester sleeves



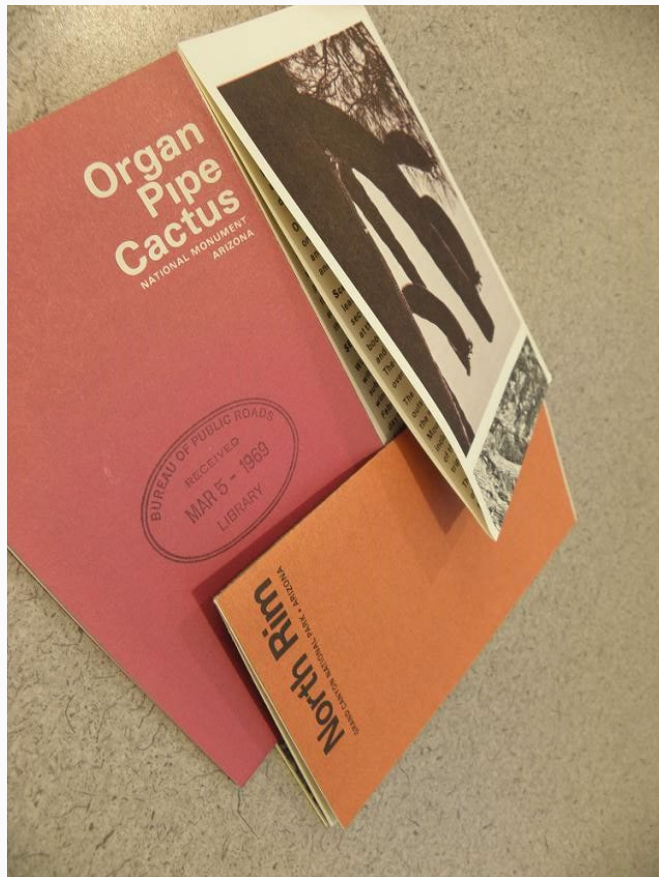
# Dale Grinder Collection



## News Items

William Coleman was the 4th US Secretary of Transportation, from March 7, 1975, to January 20, 1977, and the second African American to serve in the US Cabinet.

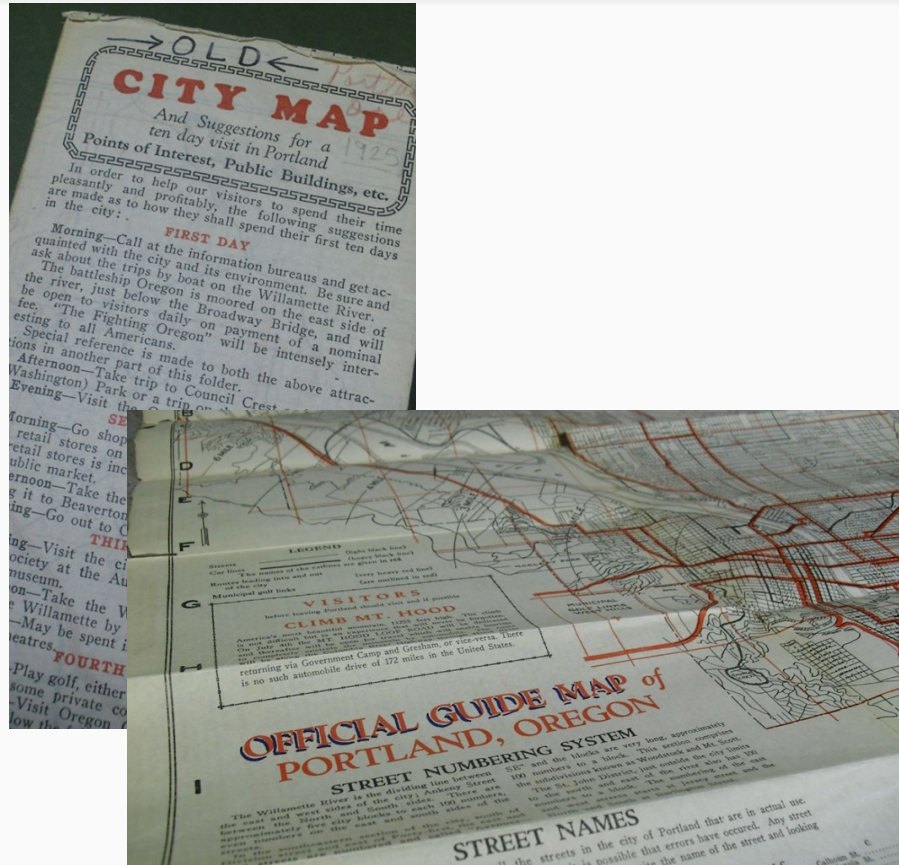
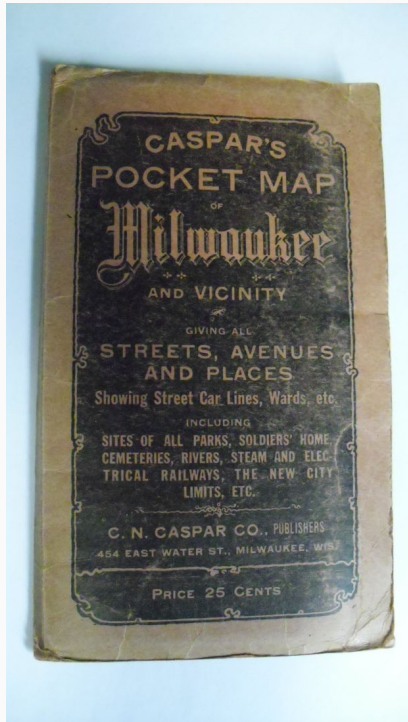
# Map Archives



## Map Preservation

Fully indexed database of collection of National park maps, historical sites, monuments and other Federally owned public spaces. Also includes tourist maps.

# Map Archives



## Map Preservation

Street maps, transit systems and schedules

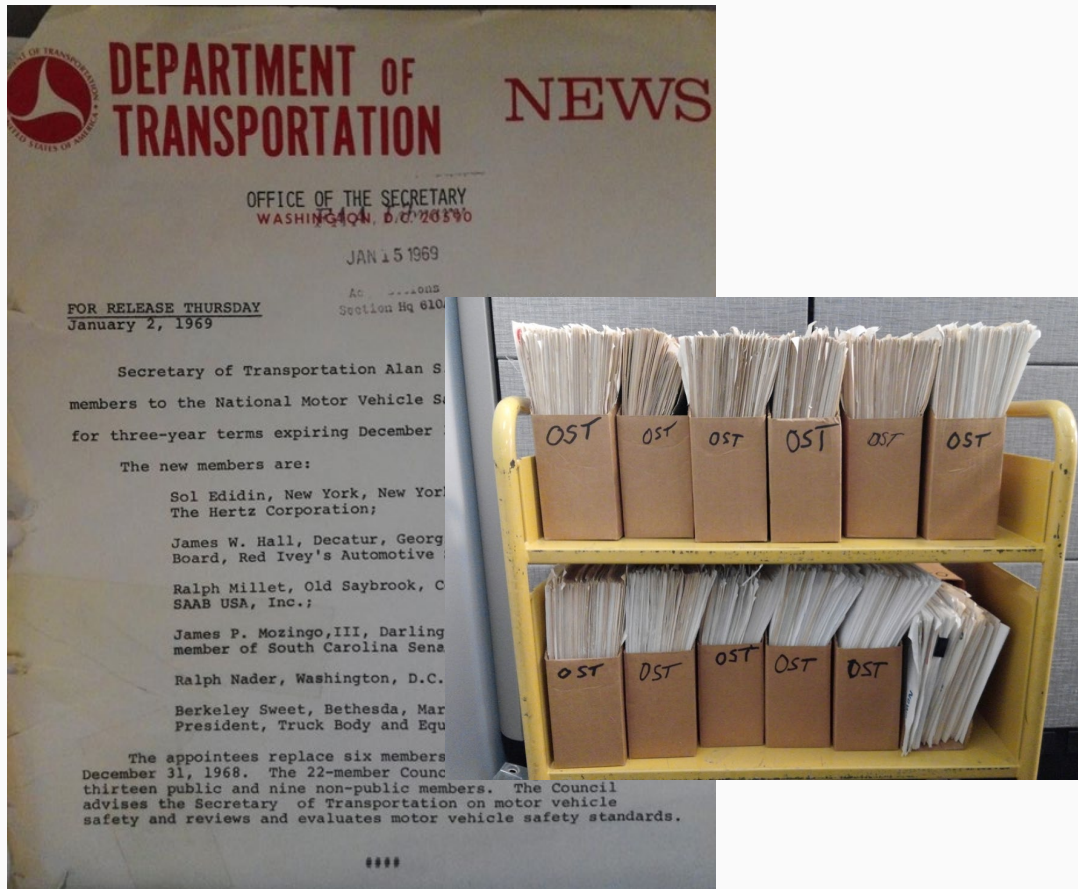
# Map Archives



## Map Preservation

Official state highway maps in archival boxes

# Department Newsletters



## USDOT Departmental Newsletters

USDOT News releases, FHWA newsletters, other individual department newsletters

# Transportation News Digests



## USDOT Weekly News Briefing

Prepared for DOT employees by Office of Public Affairs. Useful chronology compiled from copyrighted sources.

# Next steps



- Relocate boxed items to storage
- Organize a research area for access to physical items, including microfilm
- Review and select items for digital preservation: USDOT publications, at-risk and last copy of unique historical items
- Create a plan for preservation that includes in-house digitization, outsourcing, or a combination

# NTL Digital Collections

## Current Collections

- 40,000 items representing USDOT Modal Research, and USDOT sponsored research results from states and UTC's
- Legacy digitized content of historic or national significance



Investigations of  
Railroad Accidents  
1911 - 1993

## Future Collections

- 70,000 historical, digitized documents currently being migrated to ROSA P
- Archival copies of USDOT Modal Research publications in storage in Landover MD
- Materials currently being deaccessioned from the USDOT HQ Library, mostly of significance to the history of USDOT
- Oral histories



# Any Questions?

Feel free to use the chat box in the lower left hand corner, or unmute yourself to speak



U.S. Department of Transportation  
**Office of the Secretary of Transportation**  
Bureau of Transportation Statistics