

Bureau of Land Management
Alaska Long Range Transportation Plan

Appendix A
*BLM-Alaska Travel and Transportation Management
Planning Schedule*

This page intentionally left blank

Field Office	Resource Management Plan Name	RMP Completion Status		TMP Name	TMP Completion Status		TMP Acres (000)	Miles of Road, Primitive Road or Trail designated	Route Inventories: acres remaining (000)	Travel Plan Implementation Completed (%)	BLM AK Priority
		Completion Date	Planned Completion Date		Completion Date	Planned Completion Date					
Anchorage Field Office	Ring of Fire	3/21/2008		Campbell Tract SRMA		FY12	0.8	12.0	0.0	0%	4
				ERMA Lands (includes Haines)		FY13	1008	0.0	1008	0%	9
	Bay	11/14/2008		ERMA Lands		FY14	1,700	0.0	1,700	0%	13
	Kobuk-Seward Peninsula	9/4/2008		Salmon Lake-Kigluik SRMA		FY13	244	0.0	0	0%	6
				ERMA Lands		FY13	3,200	0.0	0	0%	11
	Bering Sea-Western Interior (proposed)	Southwest Management Framework Plan (1981)	To be determined (TBD)	ERMA Lands		TBD	11,800	0.0	11,800	0%	19
Arctic Field Office	Northeast National Petroleum Reserve - Integrated Activity Plan (in lieu of a RMP/Currently in planning)		Fiscal Year (FY) 2013	NPRA IAP		TBD	22,300	0.0	10,000	0%	N/A
	Utility Corridor	1/11/1991	TBD	CAMA WSA		TBD	480	0.0	480	0%	20
	Kobuk-Seward Peninsula	9/4/2008		ERMA Lands		FY13	500	0.0	0	0%	12
Central Yukon Field Office	Kobuk-Seward Peninsula	9/4/2008		Squirrel River SRMA		FY12	726	0.0	0	0%	3
				ERMA Lands		FY13	7,000	0.0	0	0%	10
	Utility Corridor	1/11/1991	TBD	Inner Corridor (Dalton Hwy)		TBD	880	0.0	350	0%	18
	ERMA Lands		TBD	ERMA Lands		TBD	4,700	0.0	4,700	0%	22
Central Yukon	9/26/1986	TBD	ERMA Lands		TBD	9,400	0.0	9,400	0%	23	
Eastern Interior Field Office	Eastern Interior (currently in planning)		FY13	WMNRA RMP (1986)		FY13	1,020	22.0	0	20%	5
				Steese NCA RMP (1986)		FY15	1,275	27.3	275	0%	17
				Fortymile Management Framework Plan (1980)		FY14	2,077	0.0	200	0%	15
				Black River Subunit and ERMA Lands		FY17	2,330	0.0	2,300	0%	21
Glennallen Field Office	East Alaska	9/7/2007		Gulkana WSR	7/21/2006		93	17.5	0	100%	1
				Delta WSR		FY12	45	9.8	0	95%	2
				Delta Range		FY13	276	0.0	25	0%	8
				Tiekel Block		FY14	248	0.0	25	0%	14
				ERMA Lands		FY15	222	0.0	30	0%	16
				Bering Glacier		FY13	827	0.0	827	0%	7
				Chistochina- Cantwell		TBD	600	0.0	500	0%	25
				Tangle Lakes Archeology District		TBD	185	40.0	30	0%	24
Totals							128.6	43,650			

Total acres managed by BLM-Alaska will change due to land conveyances to fulfill Statehood and ANCSA entitlements.
Table updated October 2011

This page intentionally left blank

Bureau of Land Management
Alaska Long Range Transportation Plan

Appendix B

*BLM Land Use Planning Relationship to Travel
Management Planning*

This page intentionally left blank

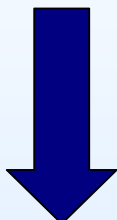
'Land Use Planning Process' and 'Travel and Transportation Management' Relationship

LAND USE PLANNING PROCESS

TRAVEL AND TRANSPORTATION MANAGEMENT

Pre-plan Analysis: Identify Issues
 Identify issues or land use problems that need to be resolved.

- Determine if the existing travel and transportation systems are meeting current and future needs, such as access and resource needs.
- Decide on the components (such as roads, primitive roads, and trails) of the travel and transportation system, which are needed for access.
- Identify areas for permanent closure.

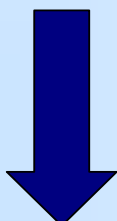


Begin compiling an administrative record related to travel and transportation management.

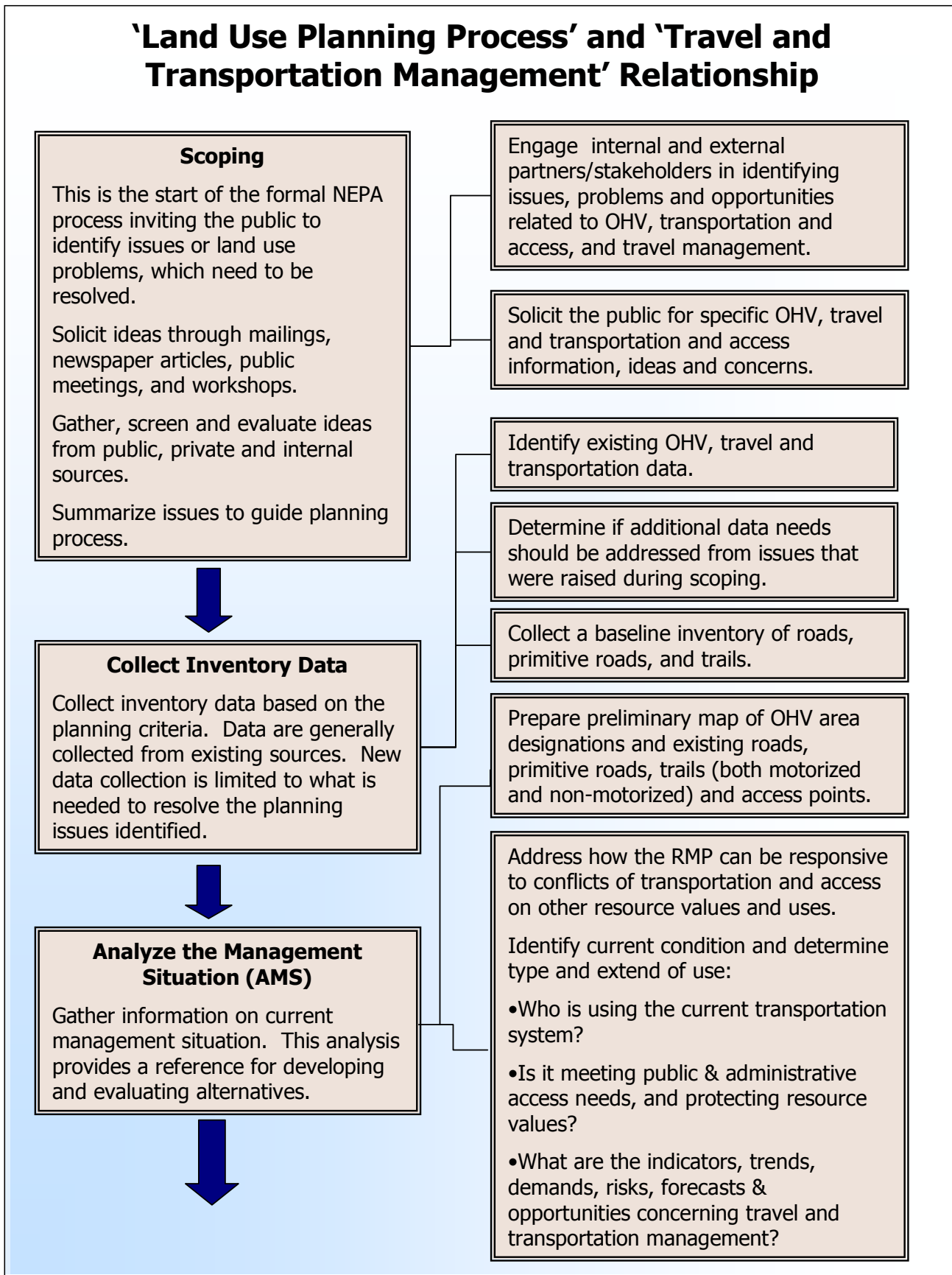
Pre-plan Analysis: Develop Planning Criteria
 Planning criteria establishes constraints and guides the planning process; set the scope of inventory and data collection. Preliminary planning criteria developed by the BLM can be modified through public comment.

Determine the level of data and information needed for all types of travel and transportation, including OHV area designations and motorized and non-motorized road, primitive road, and trail selections.

Realize the legal constraints which impact the decision space.



'Land Use Planning Process' and 'Travel and Transportation Management' Relationship



'Land Use Planning Process' and 'Travel and Transportation Management' Relationship

Formulate Alternatives

Identify a range of reasonable combinations of resource uses and management practices. Develop reasonable alternatives that address issues identified during scoping and offer a distinct choice among management strategies. Include no action alternative.

- Delineate travel management areas that meet the land use plan objectives for each alternative.
- Use "limited" OHV designation as the default designation for motorized travel.
- Document rationale for an open or closed designation & determine criteria for selecting specific routes within areas where any form of travel and access is "limited".
- Transportation alternatives should analyze closures and seasonal (and other types of restrictions).



Estimate Effects of Alternative

Collect inventory data based on the planning criteria. Data are generally collected from existing sources. New data collection (i.e., inventory) is limited to what is needed to resolve the planning issues identified.

These steps are implementation decisions & can be completed as part of the RMP or deferred to a separate travel or activity plan.

- Select roads, primitive roads, and trails available for motorized use, within 'Limited to Designated' roads and trails areas.
- Determine which non-motorized trails are open for use.



Select the Preferred Alternative

The Field Manager recommends to the State Director a preferred alternative that best resolves planning issues and promotes balanced multiple use objectives. The State Director approves selection of preferred alternative along with other alternatives under consideration.

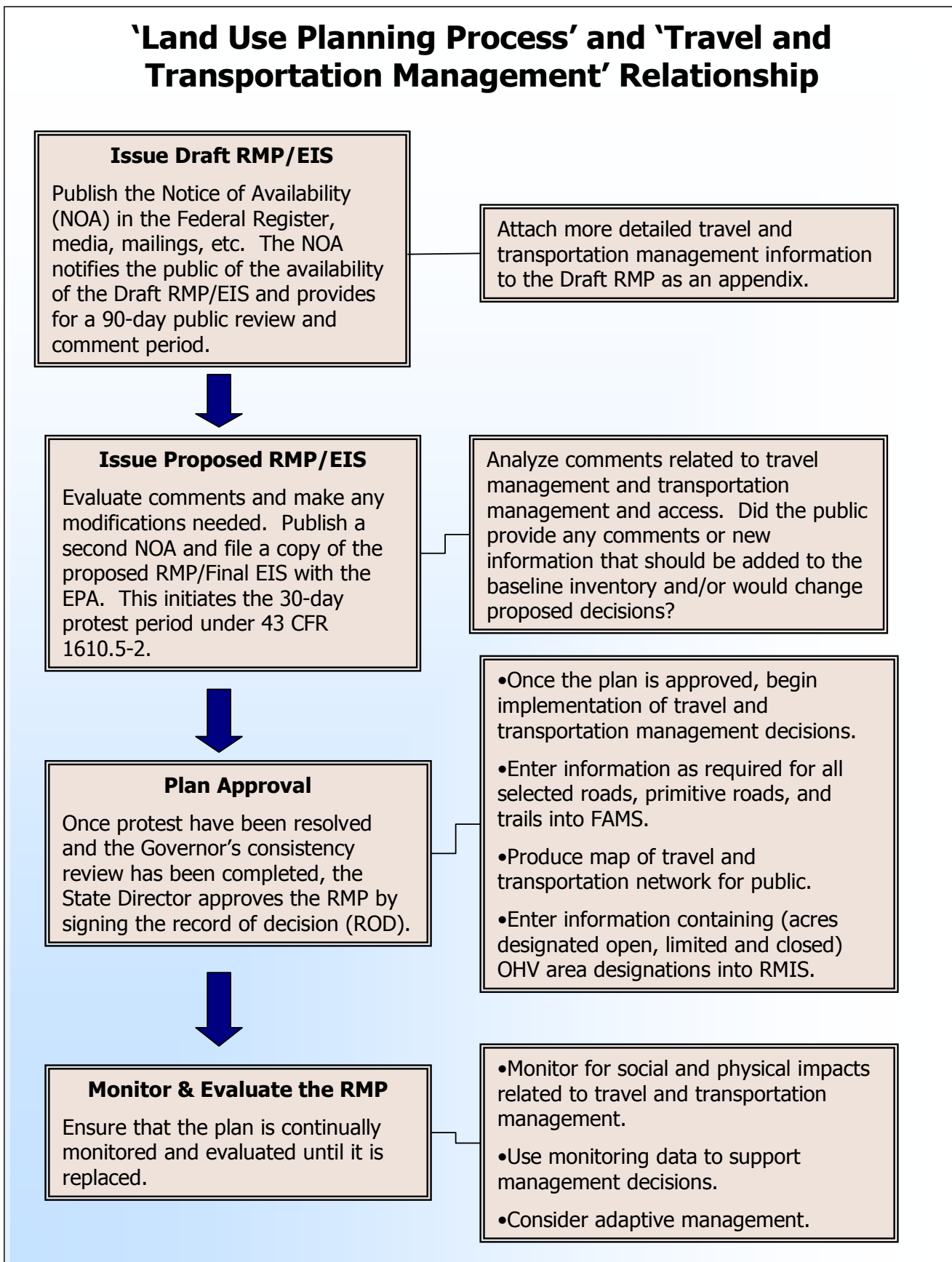
- Quantify impacts (long/short term, direct/indirect, and cumulative effects) of each alternative on public and administrative access.
- Address impacts of implementing & managing travel and transportation systems (including costs & time) for each alternative.

Analyze the impacts of travel and transportation on other resource values and uses.

Resolve conflicts prior to selection of the preferred alternative. Proposed RMP decisions should not inherently conflict with other resource values, i.e., there should not be an open OHV area overlaying T&ES habitat.



'Land Use Planning Process' and 'Travel and Transportation Management' Relationship



Bureau of Land Management
Alaska Long Range Transportation Plan

Appendix C

*BLM-Alaska Transportation Assets in the Facility Asset
Management System (FAMS)*

This page intentionally left blank

Appendix C Table 1 summarizes the BLM-Alaska road assets currently reported in FAMS. FAMS indicates that there are 92.6 total lane miles or 46.3 total miles of BLM roads on BLM-managed lands. The condition of these roads is 8.3 percent “good,” 67.9 percent “fair,” and 23.8 percent “poor.” Definitions of these condition classifications are noted below, as are primary road uses.

- AFO Anchorage Field office
- CYFO Central Yukon Field office
- EIFO Eastern Interior Field office
- GFO Glennallen Field office

Primary Road Uses

Administrative/ Year-Round – Open year-round to vehicles.

Administrative/ Seasonal – Closed during the winter season.

Road Conditions

Good – Maintenance adequate

Fair – Minor work needed

Poor – Major work/possible reroute needed
Close – Route needs to be closed to prevent resource damage.

**Appendix C Table 1
 BLM-Alaska Roads in FAMS**

ID	Office	FAMS ID	BLM Road	# Lane Miles	Primary Use	Condition	Comments
1	AFO	1810235	CTF BLM Access Road	1.2	Administrative/ Year-Round	Good	Maintained year-round. Realignment needed with Elmore Road intersection
2	AFO	1817854	McGrath Admin Road	0.2	Administrative/ Seasonal	Fair	Only maintained in summer
3	AFO	1810244	Science Center Access Road	2.4	Administrative/ Year-Round	Good	Maintained year-round
4	CYFO	178229	Arctic Circle Cg Loop Road	1.0	Administrative/ Seasonal	Fair	Maintained year-round
5	CYFO	1817808	Finger Mountain Wayside Road	0.4	Administrative/ Seasonal	Fair	Only maintained in summer
6	CYFO	1818161	Galbraith Lake Cg Access Road	2.0	Administrative/ Seasonal	Fair	Only maintained in summer
7	CYFO	1818105	Marion Creek Cg Loop Road	0.4	Administrative/ Seasonal	Fair	Only maintained in summer
8	CYFO	1818170	Prospect Creek Cg Access Road	2.0	Administrative/ Seasonal	Fair	Maintained year-round
9	CYFO	1818171	Prospect Creek Cg Loop Road	1.2	Administrative/ Seasonal	Poor	Only maintained in summer

**Appendix C Table 1
BLM-Alaska Roads in FAMS**

ID	Office	FAMS ID	BLM Road	# Lane Miles	Primary Use	Condition	Comments
10	CYFO	1818177	Sixty Mile Cg Access Road	0.4	Administrative/ Seasonal	Fair	Only maintained in summer
11	CYFO	1818169	Yukon Crossing Access Road	0.4	Administrative/ Seasonal	Fair	Only maintained in summer
12	EIFO	23034	American Creek Access Road	0.6	Administrative/ Seasonal	Fair	Maintained year-round
13	EIFO	23002	Biederman Road	1.4	Administrative/ Seasonal	Fair	Maintained year-round
14	EIFO	192187	Chicken Admin Road	0.5	Administrative/ Seasonal	Good	Only maintained in summer
15	EIFO	1818278	Cripple Creek Cg Loop Road	1.6	Administrative/ Seasonal	Fair	Only maintained in summer
16	EIFO	1834715	Davidson Ditch Access Road	0.4	Administrative/ Seasonal	Fair	Only maintained in summer
17	EIFO	23006	Eagle Admin Access Road	0.3	Administrative/ Seasonal	Fair	Only maintained in summer
18	EIFO	1824122	Eagle Cg Access Road	1.2	Administrative/ Seasonal	Fair	Only maintained in summer
19	EIFO	178335	Eagle Cg Loop Road	0.4	Administrative/ Seasonal	Fair	Only maintained in summer
20	EIFO	1818244	Eagle Summit Access Road	0.3	Administrative/ Seasonal	Fair	Only maintained in summer
21	EIFO	23005	Fort Egbert Mission Creek Road	0.9	Administrative/ Seasonal	Poor	Only maintained in summer. Damaged in 2009 Yukon River Flood.
22	EIFO	1818106	Fred Blixt Cabin Access Road	0.2	Administrative/ Year-Round	Fair	Maintained year-round
23	EIFO	35878	Fryingpan Creek Road	20.6	Administrative/ Seasonal	Poor	Not maintained
24	EIFO	178332	Lower Birch Creek Access Road	0.4	Administrative/ Seasonal	Fair	Only maintained in summer
25	EIFO	35876	Moose Creek Spur Road	1.0	Administrative/ Seasonal	Fair	Only maintained in summer
26	EIFO	1818300	Mt Prindle Cg Loop Road	0.3	Administrative/ Seasonal	Fair	Only maintained in summer
27	EIFO	23055	Nome Creek Admin Site Access Road	1.0	Administrative/ Seasonal	Fair	Only maintained in summer

**Appendix C Table 1
BLM-Alaska Roads in FAMS**

ID	Office	FAMS ID	BLM Road	# Lane Miles	Primary Use	Condition	Comments
28	EIFO	23013	Nome Creek Road— East	8.2	Administrative/ Seasonal	Fair	Only maintained in summer
29	EIFO	23014	Nome Creek Road— West	26.0	Administrative/ Seasonal	Fair	Only maintained in summer
30	EIFO	1818303	Ophir Creek Cg Loop Road	1.2	Administrative/ Seasonal	Fair	Only maintained in summer
31	EIFO	1823656	South Fork River Access Road	0.2	Administrative/ Seasonal	Poor	Only maintained in summer
32	EIFO	35877	Two-Step Louis Spur Road	0.3	Administrative/ Seasonal	Fair	Only maintained in summer
33	EIFO	178164	Upper Birch Creek Wayside Access Road	1.0	Administrative/ Seasonal	Fair	Only maintained in summer
34	EIFO	1824158	Walker Fork Cg Loop Road	1.0	Administrative/ Seasonal	Fair	Only maintained in summer
35	EIFO	1823104	West Fork Cg Loop Road	1.4	Administrative/ Seasonal	Fair	Only maintained in summer
36	GFO	23056	Brushkana Campground Loop Road	0.6	Administrative/ Seasonal	Fair	Only maintained in summer
37	GFO	1834175	Delta Take-Out Road	0.2	Administrative/ Seasonal	Fair	Only maintained in summer
38	GFO	178946	Delta Wayside Road	0.4	Administrative/ Seasonal	Fair	Only maintained in summer
39	GFO	1818335	Middle Fork Trailhead Road	0.2	Administrative/ Seasonal	Good	Only maintained in summer
40	GFO	23009	Paxson Lake Campground Access Road	2.8	Administrative/ Seasonal	Fair	Only maintained in summer
41	GFO	1827037	Sourdough Cg Boat Ramp Road	1.0	Administrative/ Seasonal	Good	Only maintained in summer
42	GFO	1827043	Sourdough Cg Loop Road	1.2	Administrative/ Seasonal	Good	Only maintained in summer
43	GFO	1818338	Swede Lake Trailhead Road	1.2	Administrative/ Seasonal	Good	Only maintained in summer
44	GFO	1818007	Tangle Lakes Cg Loop Road	3.0	Administrative/ Seasonal	Fair	Only maintained in summer

Appendix C Table 2 summarizes BLM-Alaska’s trail assets currently reported in FAMS. FAMS indicates that there are 1,571.2 miles of BLM trails on BLM-managed lands. The condition of these trails is 8.8 percent “good”, 27.3 percent “fair”, and 63.9 percent “poor”. Definitions of these condition classifications are noted below, as are the primary trail uses.

- AFO Anchorage Field office
- CYFO Central Yukon Field office
- EIFO Eastern Interior Field office
- GFO Glennallen Field office

Primary Trail Uses

Trail Conditions

Non -Motorized Year-Round – Closed to motorized vehicles year-round

Good – Maintenance adequate

Fair – Minor work needed

Non-Motorized Summer/ Motorized Winter – Closed to summer use of motorized vehicles, open to winter use of snowmachines

Poor – Major work/possible reroute needed

Close – Route needs to be closed to prevent resource damage

Motorized Year-Round – Limitations may apply to use of motorized vehicles

**Appendix C Table 2
BLM-Alaska Trails in FAMS**

#	Office	FAMS ID	BLM Trail	# Miles	Primary Use	Condition	Allowable Uses
1	AFO	1834403	CTF Birch Knob Trail	0.6	Non-Motorized Year-Round	Good	Foot, Bikes, Horses, Skis, Snowshoes, Dog Sleds
2	AFO	1834412	CTF Birch Meadow Trail	0.1	Non-Motorized Year-Round	Good	Foot, Bikes, Horses, Skis, Snowshoes, Dog Sleds
3	AFO	1834050	CTF Coyote Trail	0.9	Non-Motorized Year-Round	Good	Foot, Bikes, Horses, Skis, Snowshoes, Dog Sleds
4	AFO	1834414	CTF Dogsled Trail System	3.6	Non-Motorized Year-Round	Good	Foot, Bikes, Horses, Skis, Snowshoes, Dog Sleds
5	AFO	1834052	CTF Lore Trail	0.3	Non-Motorized Year-Round	Good	Foot, Bikes, Horses, Skis, Snowshoes, Dog Sleds
6	AFO	1834053	CTF Lynx Trail	0.6	Non-Motorized Year-Round	Good	Foot, Bikes, Horses, Skis, Snowshoes, Dog Sleds
7	AFO	1834405	CTF Moose Meadow Trail	0.1	Non-Motorized Year-Round	Good	Foot, Bikes, Horses, Skis, Snowshoes, Dog Sleds
8	AFO	1834049	CTF Moose Track Trail	0.8	Non-Motorized Year-Round	Good	Foot, Bikes, Horses, Skis, Snowshoes, Dog Sleds
9	AFO	1834407	CTF Old Rondy Trail	0.5	Non-Motorized Year-Round	Good	Foot, Bikes, Horses, Skis, Snowshoes, Dog Sleds

Appendix C Table 2
BLM-Alaska Trails in FAMS

#	Office	FAMS ID	BLM Trail	# Miles	Primary Use	Condition	Allowable Uses
10	AFO	1834055	CTF P-38 Trail	1.6	Non-Motorized Year-Round	Good	Foot, Bikes, Horses, Skis, Snowshoes, Dog Sleds
11	AFO	1834954	CTF Viewpoint Trail	2.6	Non-Motorized Year-Round	Good	Foot, Bikes, Horses, Skis, Snowshoes, Dog Sleds
12	AFO	35880	Iditarod National Historic Trail	642.0	Motorized Year-Round	Poor	ATVs, Bikes, Dog Sleds, Ski, Snowmachines
13	CYFO	1824702	Arctic Visitor Center Trail	0.1	Non-Motorized Year-Round	Fair	Foot
14	CYFO	1824701	Finger Mountain Trail	0.2	Non-Motorized Year-Round	Fair	Foot
15	CYFO	1834717	Grayling Lake Trail	0.1	Non-Motorized Year-Round	Fair	Foot
16	CYFO	1834758	Yukon River Crossing Trail	0.2	Non-Motorized Year-Round	Fair	Foot
17	EIFO	35971	Bachelor Creek Trail	5.0	Motorized Year-Round	Poor	Foot, ATVs, Bikes, Horses, Skis, Dog Sleds, Snowmachines
18	EIFO	23039	Bear Creek Trail	5.5	Motorized Year-Round	Poor	Foot, ATVs, Bikes, Horses, Skis, Dog Sleds, Snowmachines
19	EIFO	23018	Big Bend Trail	15.0	Motorized Year-Round	Poor	Foot, ATVs, Bikes, Horses, Skis, Dog Sleds, Snowmachines
20	EIFO	1834743	Birch Creek Trail	0.1	Non-Motorized Summer/ Motorized Winter	Fair	Foot, Bikes, Horses, Skis, Snowshoes, Dog Sleds, Snowmachines
21	EIFO	23016	Cache Mountain Loop Trail	23.0	Non-Motorized Summer/ Motorized Winter	Fair	Foot, Bikes, Horses, Skis, Snowshoes, Dog Sleds, Snowmachines
22	EIFO	23017	Caribou Bluff Cabin Spur Trail	1.0	Non-Motorized Summer/ Motorized Winter	Fair	Foot, Bikes, Horses, Skis, Snowshoes, Dog Sleds, Snowmachines
23	EIFO	35954	Chicken Dredge Trail	0.7	Non-Motorized Year-Round	Good	Foot
24	EIFO	23019	Colorado Creek Trail	23.0	Motorized Year-Round	Fair	Foot, ATVs, Bikes, Horses, Skis, Dog Sleds, Snowmachines

**Appendix C Table 2
BLM-Alaska Trails in FAMS**

#	Office	FAMS ID	BLM Trail	# Miles	Primary Use	Condition	Allowable Uses
25	EIFO	1834777	Cripple Creek Campground Trail	0.6	Non-Motorized Year-Round	Fair	Foot
26	EIFO	1834742	Eagle Summit Interpretation Trail	0.2	Non-Motorized Year-Round	Fair	Foot
27	EIFO	23058	Eleazar's Cabin Spur Trail	1.1	Non-Motorized Summer/ Motorized Winter	Poor	Foot, Bikes, Horses, Skis, Snowshoes, Dog Sleds, Snowmachines
28	EIFO	1827732	Fort Egbert Campground Trail	0.6	Motorized Year-Round	Good	Foot, ATVs, Bikes, Horses, Skis, Dog Sleds, Snowmachines
29	EIFO	23008	Fort Egbert Hospital Trail	0.2	Motorized Year-Round	Good	Foot, ATVs, Bikes, Horses, Skis, Dog Sleds, Snowmachines
30	EIFO	1827730	Fort Egbert Officer Row Trail	0.1	Motorized Year-Round	Good	Foot, ATVs, Bikes, Horses, Skis, Dog Sleds, Snowmachines
31	EIFO	35953	Fort Egbert Waterline Trail	0.4	Motorized Year-Round	Good	Foot, ATVs, Bikes, Horses, Skis, Dog Sleds, Snowmachines
32	EIFO	1827731	Fort Egbert Waterwagon To Hospital Ruins Trail	0.1	Motorized Year-Round	Good	Foot, ATVs, Bikes, Horses, Skis, Dog Sleds, Snowmachines
33	EIFO	1827728	Fort Egbert Waterwagon Trail	0.8	Motorized Year-Round	Good	Foot, ATVs, Bikes, Horses, Skis, Dog Sleds, Snowmachines
34	EIFO	23049	Fossil Creek Trail	20.0	Non-Motorized Summer/ Motorized Winter	Fair	Foot, Bikes, Horses, Skis, Snowshoes, Dog Sleds, Snowmachines
35	EIFO	35949	Fossil Gap Trail	8.0	Non-Motorized Summer/ Motorized Winter	Fair	Foot, Bikes, Horses, Skis, Snowshoes, Dog Sleds, Snowmachines
36	EIFO	35950	Lower Nome Creek Trail	6.0	Motorized Year-Round	Fair	Foot, ATVs, Bikes, Horses, Skis, Dog Sleds, Snowmachines
37	EIFO	23024	McKay Creek Trail	17.5	Motorized Year-Round	Fair	Foot, ATVs, Bikes, Horses, Skis, Dog Sleds, Snowmachines

Appendix C Table 2
BLM-Alaska Trails in FAMS

#	Office	FAMS ID	BLM Trail	# Miles	Primary Use	Condition	Allowable Uses
38	EIFO	35967	Mission Creek Trail	0.1	Motorized Year-Round	Good	Foot, ATVs, Bikes, Horses, Skis, Dog Sleds, Snowmachines
39	EIFO	35946	Moose Creek Trail	9.0	Motorized Year-Round	Fair	Foot, ATVs, Bikes, Horses, Skis, Dog Sleds, Snowmachines
40	EIFO	35951	Mt Prindle Trail	5.0	Non-Motorized Summer/ Motorized Winter	Poor	Foot, Bikes, Horses, Skis, Snowshoes, Dog Sleds, Snowmachines
41	EIFO	23021	Pinnell Mountain National Recreation Trail	27.0	Non-Motorized Year-Round	Fair	Foot, Bikes, Horses, Skis, Snowshoes, Dog Sleds
42	EIFO	23038	Quartz Creek Trail	18.0	Motorized Year-Round	Good	Foot, ATVs, Bikes, Horses, Skis, Dog Sleds, Snowmachines
43	EIFO	35973	Seventymile Trail	70.0	Motorized Year-Round	Fair	Foot, ATVs, Bikes, Horses, Skis, Dog Sleds, Snowmachines
44	EIFO	35944	Ski Loop Trail	1.5	Non-Motorized Year-Round	Fair	Foot, Bikes, Horses, Skis, Snowshoes, Dog Sleds
45	EIFO	35968	South Fork Trail	1.0	Motorized Year-Round	Fair	Foot, ATVs, Bikes, Horses, Skis, Dog Sleds, Snowmachines
46	EIFO	35947	Summit Trail	18.0	Non-Motorized Year-Round	Fair	Foot, Bikes, Horses, Skis, Snowshoes, Dog Sleds
47	EIFO	23042	Table Top Mountain Trail	3.0	Non-Motorized Year-Round	Poor	Foot, Bikes, Horses, Skis, Snowshoes, Dog Sleds
48	EIFO	23022	Trail Creek Trail	33.0	Motorized Year-Round	Poor	Foot, ATVs, Bikes, Horses, Skis, Dog Sleds, Snowmachines
49	EIFO	35965	Walker Creek River Trail	8.7	Motorized Year-Round	Fair	Foot, ATVs, Bikes, Horses, Skis, Dog Sleds, Snowmachines
50	EIFO	35945	Wickersham Creek (Old) Trail	3.0	Motorized Year-Round	Poor	Foot, ATVs, Bikes, Horses, Skis, Dog Sleds, Snowmachines
51	EIFO	23048	Wickersham Creek Trail	20.0	Non-Motorized Summer/ Motorized Winter	Fair	Foot, Bikes, Horses, Skis, Snowshoes, Dog Sleds, Snowmachines

Appendix C Table 2
BLM-Alaska Trails in FAMS

#	Office	FAMS ID	BLM Trail	# Miles	Primary Use	Condition	Allowable Uses
52	EIFO	23050	Windy Creek Trail	9.0	Non-Motorized Summer/ Motorized Winter	Fair	Foot, Bikes, Horses, Skis, Snowshoes, Dog Sleds, Snowmachines
53	EIFO	35952	Yukon Quest Trail	80.0	Motorized Year-Round	Poor	Foot, ATVs, Bikes, Horses, Skis, Dog Sleds, Snowmachines
54	GFO	1824242	54 Mile Trail	2.0	Motorized Year-Round	Poor	Foot, ATVs, Bikes, Horses, Skis, Dog Sleds, Snowmachines
55	GFO	35883	Bernard Creek Trail	14.0	Motorized Year-Round	Poor	Foot, ATVs, Bikes, Horses, Skis, Dog Sleds, Snowmachines
56	GFO	35925	Brushkana Creek South Trail	10.0	Motorized Year-Round	Fair	Foot, ATVs, Bikes, Horses, Skis, Dog Sleds, Snowmachines
57	GFO	35924	Brushkana Creek Trail	6.0	Motorized Year-Round	Fair	Foot, ATVs, Bikes, Horses, Skis, Dog Sleds, Snowmachines
58	GFO	35916	Butte Creek Trail	17.0	Motorized Year-Round	Fair	Foot, ATVs, Bikes, Horses, Skis, Dog Sleds, Snowmachines
59	GFO	1824240	Butte Creek Trail	8.0	Motorized Year-Round	Fair	Foot, ATVs, Bikes, Horses, Skis, Dog Sleds, Snowmachines
60	GFO	35910	Chistochina River Trail	12.0	Motorized Year-Round	Poor	Foot, ATVs, Bikes, Horses, Skis, Dog Sleds, Snowmachines
61	GFO	35919	Clearwater Creek South Trail	5.0	Motorized Year-Round	Poor	Foot, ATVs, Bikes, Horses, Skis, Dog Sleds, Snowmachines
62	GFO	35888	Copper River Trail	5.0	Non-Motorized Summer/ Motorized Winter	Fair	Foot, Bikes, Horses, Skis, Snowshoes, Dog Sleds, Snowmachines
63	GFO	35920	Corkscrew Creek Trail	4.5	Motorized Year-Round	Poor	Foot, ATVs, Bikes, Horses, Skis, Dog Sleds, Snowmachines
64	GFO	1824237	Dickey Lake Trail	6.0	Motorized Year-Round	Fair	Foot, ATVs, Bikes, Horses, Skis, Dog Sleds, Snowmachines

Appendix C Table 2
BLM-Alaska Trails in FAMS

#	Office	FAMS ID	BLM Trail	# Miles	Primary Use	Condition	Allowable Uses
65	GFO	1824239	Dry Lakes Trail	9.0	Motorized Year-Round	Poor	Foot, ATVs, Bikes, Horses, Skis, Dog Sleds, Snowmachines
66	GFO	35927	Edmonds Creek Trail	6.0	Motorized Year-Round	Poor	Foot, ATVs, Bikes, Horses, Skis, Dog Sleds, Snowmachines
67	GFO	35892	Ewan Lake Trail	22.0	Motorized Year-Round	Poor	Foot, ATVs, Bikes, Horses, Skis, Dog Sleds, Snowmachines
68	GFO	35941	Fiftynine Mile Creek Trail	3.0	Non-Motorized Year-Round	Poor	Foot, Bikes, Horses, Skis, Snowshoes, Dog Sleds
69	GFO	35940	Fourth of July Creek Trail	4.0	Motorized Year-Round	Fair	Foot, ATVs, Bikes, Horses, Skis, Dog Sleds, Snowmachines
70	GFO	35890	Fox Lake Trail	10.0	Non-Motorized Summer/ Motorized Winter	Poor	Foot, Bikes, Horses, Skis, Snowshoes, Dog Sleds, Snowmachines
71	GFO	35934	Gakona River Trail	8.0	Motorized Year-Round	Poor	Foot, ATVs, Bikes, Horses, Skis, Dog Sleds, Snowmachines
72	GFO	35898	Gillespie Lake Trail	1.0	Non-Motorized Year-Round	Fair	Foot, Bikes, Horses, Skis, Snowshoes, Dog Sleds
73	GFO	35913	Gulkana MP 141 Trail	1.0	Non-Motorized Year-Round	Fair	Foot, ATVs, Bikes, Horses, Skis, Dog Sleds, Snowmachines
74	GFO	35896	Haggard Creek Trail	7.0	Motorized Year-Round	Poor	Foot, ATVs, Bikes, Horses, Skis, Dog Sleds, Snowmachines
75	GFO	35921	Hatchet Lake Trail	8.0	Motorized Year-Round	Poor	Foot, ATVs, Bikes, Horses, Skis, Dog Sleds, Snowmachines
76	GFO	35908	Hudson Lake Trail	6.5	Motorized Year-Round	Poor	Foot, ATVs, Bikes, Horses, Skis, Dog Sleds, Snowmachines
77	GFO	35928	Jack Creek Trail	20.0	Motorized Year-Round	Fair	Foot, ATVs, Bikes, Horses, Skis, Dog Sleds, Snowmachines
78	GFO	35897	June Lake Trail	1.0	Non-Motorized Year-Round	Fair	Foot, Bikes, Horses, Skis, Snowshoes, Dog Sleds

Appendix C Table 2
BLM-Alaska Trails in FAMS

#	Office	FAMS ID	BLM Trail	# Miles	Primary Use	Condition	Allowable Uses
79	GFO	35909	Klutina Lake Trail	23.0	Motorized Year-Round	Good	Foot, ATVs, Bikes, Horses, Skis, Dog Sleds, Snowmachines
80	GFO	35902	Landmark Gap South Trail	18.0	Motorized Year-Round	Fair	Foot, ATVs, Bikes, Horses, Skis, Dog Sleds, Snowmachines
81	GFO	35889	Liberty Falls Trail	2.5	Non-Motorized Year-Round	Good	Foot, Bikes, Skis, Snowshoes,
82	GFO	35911	Mankomen Lake Trail	8.0	Motorized Year-Round	Poor	Foot, ATVs, Bikes, Horses, Skis, Dog Sleds, Snowmachines
83	GFO	35899	Middle Fork Trail	23.0	Motorized Year-Round	Fair	Foot, ATVs, Bikes, Horses, Skis, Dog Sleds, Snowmachines
84	GFO	35930	Mile 152 West Trail	3.0	Motorized Year-Round	Poor	Foot, ATVs, Bikes, Horses, Skis, Dog Sleds, Snowmachines
85	GFO	35933	Mile 174 East Trail	8.0	Motorized Year-Round	Poor	Foot, ATVs, Bikes, Horses, Skis, Dog Sleds, Snowmachines
86	GFO	1824238	Mile 87.6 Trail	6.5	Motorized Year-Round	Poor	Foot, ATVs, Bikes, Horses, Skis, Dog Sleds, Snowmachines
87	GFO	35893	Old Beaver Dam Trail	1.0	Non-Motorized Year-Round	Poor	Foot, Bikes, Skis, Snowshoes,
88	GFO	35929	Old Richardson Trail	5.5	Motorized Year-Round	Good	Foot, ATVs, Bikes, Horses, Skis, Dog Sleds, Snowmachines
89	GFO	35935	One Mile Creek/ Wolverine Mtn Trail	6.0	Motorized Year-Round	Poor	Foot, ATVs, Bikes, Horses, Skis, Dog Sleds, Snowmachines
90	GFO	35904	Osar Lake Trail	8.0	Motorized Year-Round	Good	Foot, ATVs, Bikes, Horses, Skis, Dog Sleds, Snowmachines
91	GFO	35894	Poplar Grove/ Gulkana Trail	1.0	Non-Motorized Year-Round	Fair	Foot, Bikes, Horses, Skis, Snowshoes, Dog Sleds
92	GFO	35931	Round Top Trail	3.0	Motorized Year-Round	Poor	Foot, ATVs, Bikes, Horses, Skis, Dog Sleds, Snowmachines

Appendix C Table 2
BLM-Alaska Trails in FAMS

#	Office	FAMS ID	BLM Trail	# Miles	Primary Use	Condition	Allowable Uses
93	GFO	35912	Sailor's Pit Trail	1.0	Motorized Year-Round	Good	Foot, ATVs, Bikes, Horses, Skis, Dog Sleds, Snowmachines
94	GFO	35926	Seattle Creek Trail	15.0	Motorized Year-Round	Poor	Foot, ATVs, Bikes, Horses, Skis, Dog Sleds, Snowmachines
95	GFO	1827594	Sourdough Cg Loop To Fishing Area	0.2	Non-Motorized Year-Round	Good	Foot, Bikes, Skis, Snowshoes
96	GFO	1827593	Sourdough Cg Creek Overlook To Cabana	0.3	Non-Motorized Year-Round	Good	Foot, Bikes, Skis, Snowshoes
97	GFO	1827596	Sourdough Cg Main Trail Spur To Boat Ramp	0.1	Non-Motorized Year-Round	Good	Foot, Bikes, Skis, Snowshoes
98	GFO	1827595	Sourdough Cg Main Trail Spur To Water Bldg	0.1	Non-Motorized Year-Round	Good	Foot, Bikes, Skis, Snowshoes
99	GFO	1827592	Sourdough Cg W Cg Loop To E Cg Loop	0.1	Non-Motorized Year-Round	Good	Foot, Bikes, Skis, Snowshoes
100	GFO	1827590	Sourdough Cg Water Bldg To Cg Loop	0.1	Non-Motorized Year-Round	Good	Foot, Bikes, Skis, Snowshoes
101	GFO	1827591	Sourdough Cg Water Bldg To Cpu To W Cg Loop	0.2	Non-Motorized Year-Round	Good	Foot, Bikes, Skis, Snowshoes,
102	GFO	23011	Sourdough Creek Trail	0.1	Non-Motorized Year-Round	Good	Foot, Bikes, Horses, Skis, Snowshoes, Dog Sleds
103	GFO	35915	Sourdough/ Ewan Lake Trail	8.0	Motorized Year-Round	Poor	Foot, ATVs, Bikes, Horses, Skis, Dog Sleds, Snowmachines
104	GFO	35932	Spring Lake Trail	3.0	Motorized Year-Round	Poor	Foot, ATVs, Bikes, Horses, Skis, Dog Sleds, Snowmachines
105	GFO	35917	Susitna Overlook Trail	1.0	Motorized Year-Round	Fair	Foot, ATVs, Bikes, Horses, Skis, Dog Sleds, Snowmachines
106	GFO	35900	Swede Lake Trail	32.0	Motorized Year-Round	Good	Foot, ATVs, Bikes, Horses, Skis, Dog Sleds, Snowmachines

Appendix C Table 2
BLM-Alaska Trails in FAMS

#	Office	FAMS ID	BLM Trail	# Miles	Primary Use	Condition	Allowable Uses
107	GFO	35895	Telegraph Cut Trail	1.0	Non-Motorized Year-Round	Poor	Foot, Bikes, Horses, Skis, Snowshoes, Dog Sleds
108	GFO	35914	Tiger Mine Trail	8.0	Motorized Year-Round	Good	Foot, ATVs, Bikes, Horses, Skis, Dog Sleds, Snowmachines
109	GFO	35939	Tonsina Lake Trail	3.0	Motorized Year-Round	Poor	Foot, ATVs, Bikes, Horses, Skis, Dog Sleds, Snowmachines
110	GFO	35887	Tonsina River Trail	2.0	Non-Motorized Summer/ Motorized Winter	Good	Foot, Bikes, Horses, Skis, Snowshoes, Dog Sleds, Snowmachines
111	GFO	35938	Top-Of-The-World Trail	20.0	Motorized Year-Round	Fair	Foot, ATVs, Bikes, Horses, Skis, Dog Sleds, Snowmachines
112	GFO	35937	Twelve Mile Creek Trail	12.0	Motorized Year-Round	Poor	Foot, ATVs, Bikes, Horses, Skis, Dog Sleds, Snowmachines
113	GFO	35923	Valdez Creek Trail	20.0	Motorized Year-Round	Good	Foot, ATVs, Bikes, Horses, Skis, Dog Sleds, Snowmachines
114	GFO	35922	Windy Creek Trail	15.0	Motorized Year-Round	Fair	Foot, ATVs, Bikes, Horses, Skis, Dog Sleds, Snowmachines

Bureau of Land Management
Alaska Long Range Transportation Plan

Appendix D

Alaska Native Claims Settlement Act (ANCSA)
and the

Alaska National Interest Lands Conservation Act (ANILCA)

This page intentionally left blank

Prior to statehood, nearly all land in Alaska was federally-owned. The 1959 Alaska Statehood Act granted the State selection of 104 million acres of federal land. Much of the land selected for State ownership, consisted of lands traditionally used by Alaska Natives. Contention and several lawsuits arose as a result. This situation finally led to broad Alaska Native community objections and resulted in a freeze on further state land selections until Congress could settle the Native claim issues.

In 1971 Congress passed the Alaska Native Claims Settlement Act (ANCSA), a fundamental purpose of which was resolution of Native land claims. ANCSA provides for the conveyance of approximately 44 million acres of public land to the Native Corporations. ANCSA section 17(b) provided for the reservation of public easements across lands conveyed to Native corporations to provide access to public lands.

In 1980, Congress enacted the Alaska National Interest Lands Conservation Act (ANILCA), which created 21 new conservation system units, designated 3210 miles of wild and scenic rivers and 57 million acres of Wilderness Areas, and expanded 12 existing parks and refuges, influencing over 157 million acres in Alaska.

The federal land management agencies involved in this LRTP recognize the importance of ANILCA and carefully consider the Act in addressing access issues in this, and subsequent transportation plans. The full text of ANILCA Title VIII, XI, XIII, and ANCSA Section 17(b) are as follows:

Selected Access Provisions of

Alaska National Interest Lands Conservation Act (ANILCA)

ANILCA Title VIII - Subsistence Management and Use

Access for Subsistence Uses

Section 811(a) *The Secretary [of the Interior] shall ensure that rural residents engaged in subsistence uses shall have reasonable access to subsistence resources on the public lands.*

811(b) *Notwithstanding any other provisions of this act or other law, the Secretary shall permit on the public lands appropriate use for subsistence purposes of snowmobiles, motorboats, and other means of surface transportation traditionally employed for such purposes by local residents, subject to reasonable regulation.” (emphasis added)*

Subsistence access pursuant to ANILCA Section 811 is generally considered “open until closed” and limitations to access that may significantly restrict subsistence uses or cause substantial interference with access to subsistence sites will require compliance with the procedural requirements of ANILCA Section 810 *Subsistence and Land Use Decisions*.

Ideally subsistence uses, or lack thereof, and a history of traditionally employed surface transportation and routes will have been tentatively identified during creation of an RMP or in subsequent step down plans. This includes:

- Identifying subsistence uses (including hunting, fishing, trapping, berry picking, gathering and cutting firewood, and gathering other plant materials)
- Identifying traditional modes of access for these subsistence activities
- Addressing shifting subsistence resources may necessitate adjustments in the BLM transportation network

- Identifying reason(s) for closures (i.e. is causing an adverse impact on public health and safety; for resource protection; to protect historic or scientific values; subsistence uses; or other purposes or values for which the areas or units were created; or the conservation of endangered or threatened species)

Current use of OHVs for subsistence purposes does not necessarily equate to their having been traditionally employed, or that their current use is appropriate. If a restriction to access is going to be based on the fact that the access methodology is not traditional, it would be necessary to first document subsistence uses and traditional modes of access that was generally occurring at the passage of ANILCA. However, if specific, contemporary resource impacts are occurring, it is not necessary to first document traditional modes of access prior to imposing restrictions on OHV use.

If a restriction, limitation, or closure may significantly restrict subsistence uses, BLM will need to evaluate impacts on subsistence use as directed by BLM's Section 810 Compliance Policy. First, there must be a finding of whether or not the proposed action may have a significant restriction on subsistence uses. If there is a positive finding, a notice and public hearing, and a final determination are required before any significant restriction or closure can be implemented.

ANILCA Title XI – Transportation and Utility Systems In and Across, and Access Into, Conservation System Units

Special Access and Access to Inholdings

Sections 1110(a) & (b) applies to current and future conservation system units (wild and scenic rivers, wilderness areas, congressionally designated national trails), national recreation areas, and national conservation areas.

Section 1110(a) provides for the *“use of snowmachines (during periods of adequate snow cover, or frozen river conditions in the case of wild and scenic rivers), motorboats, airplanes, and nonmotorized surface transportation methods for traditional activities... and for travel to and from villages and homesites.... subject to reasonable regulation.”* Closures and restrictions cannot be implemented without notice and hearing, and a finding that such use would be detrimental to the resource values of the unit or area (see Department of Interior (DOI) regulations at 43 CFR 36.11).

Section 1110(b) assures inholders *“... adequate and feasible access for economic and other purposes.... subject to reasonable regulations... to protect the natural and other values of such lands”* (see DOI regulations at 43 CFR 36.10).

ANILCA Title XIII – Administrative Provisions

Access to inholdings on general BLM land and not addressed by ANILCA Section 1110(b)

For general public lands managed by the Bureau of Land Management, ANILCA Section 1323(b) states: *Notwithstanding any other provision of law, and subject to such terms and conditions as the Secretary of the Interior may prescribe, the Secretary shall provide such access to nonfederally owned land surrounded by public lands managed by the Secretary under the Federal Land Policy and Management Act of 1976 (43 U.S.C. 1701-82) as the Secretary deems adequate to secure to the owner the reasonable use and enjoyment thereof: Provided, that such owner comply with rules and regulations applicable to access across public lands.”*

Bureau of Land Management
Alaska Long Range Transportation Plan

Appendix E
Glossary of Terms

This page intentionally left blank

Glossary of Terms

Assets: Engineering term used to describe building and non-building facility and transportation constructions that include roads, primitive roads, and trails that are included in the Facility Asset Management System (FAMS). Assets are maintained through the annual maintenance and deferred maintenance programs. (See the “Roads and Trails Terminology Report” at http://www.blm.gov/pgdata/etc/medialib/blm/wo/Information_Resources_Management/policy/im_attachments/2006.Par.69739.File.dat/im2006-173attach2.pdf).

- **Road:** A linear route declared a road by the owner, managed for use by low-clearance vehicles having four or more wheels, and maintained for regular and continuous use.
- **Primitive Road:** A linear route managed for use by four-wheel drive or high-clearance vehicles. These routes do not customarily meet any BLM road design standards. Unless specifically prohibited, primitive roads can be used for hiking, biking, horses, etc.
- **Trail:** A linear route managed for human-powered, stock, or off-road vehicle forms of transportation or for historic or heritage values. Trails are not generally managed for use by four-wheel drive or high-clearance vehicles.

Cooperating Agency: Assists the lead federal agency in developing an EA or EIS. The Council on Environmental Quality regulations implementing NEPA define a cooperating agency as any agency that has jurisdiction by law or special expertise for proposals covered by NEPA (40 CFR 1501.6). Any federal, state, or local government jurisdiction with such qualifications may become a cooperating agency by agreement with the lead agency.

Comprehensive Travel and Transportation Management: Comprehensive travel management planning should address all resource use aspects (such as recreational, traditional, casual, industrial, commercial and educational) and accompanying modes and conditions of travel on the public lands, not just motorized or off-highway vehicle activities.

Environmental Assessment (EA): An Environmental Assessment is compiled to determine the need for an EIS. The assessment is a formal process used to predict the environmental consequences of any development project.

Environmental Impact Statement (EIS): The National Environmental Policy Act (NEPA) requires consideration and disclosure of environmental and socio-economic impacts associated with any proposed action. The analysis will be documented in an EIS. The EIS will identify potential impacts that implementation of the RMP could have on the environment and identify appropriate measures to mitigate those impacts.

Facility Asset Management System (FAMS): The BLM’s national database that tracks asset inventory and maintenance needs. This database is for all BLM building and non-building engineered and “Constructed” Assets, not just transportation assets, and does not generally include non-constructed assets such as human-made linear features and disturbances that are not part of the BLM’s transportation network.

Ground Transportation Linear Feature: A geospatial database of transportation (from motorized to foot) linear features as they exist on the ground. Features include all linear features not just what is in the BLM Transportation System.

Implementation Plan: A site-specific plan written to implement decisions made in a land use plan. An implementation plan usually selects and applies best management practices to meet land use plan objectives. Implementation plans are synonymous with “activity” plans. Examples of implementation plans include interdisciplinary management plans, travel and transportation management plan, habitat management plans, and allotment management plans.

Implementation Plan Decisions: Decisions that take action to implement land use plan decisions; generally appealable to IBLA under 43 CFR 4.410.

Lands with Wilderness Characteristics (LWC): Lands that have been inventoried and determined by the BLM to contain wilderness characteristics as defined in Section 2(c) of the Wilderness Act.

Limited OHV Designations: The Limited designation is used where OHV use is managed to meet specific resource management objectives. Management of OHVs may include limiting the number or type of vehicles, time or season of use; allowing permitted or licensed use only; limit OHV use to designated roads and trails; or other limitations necessary to meet resource management objectives, including certain competitive or intensive use areas that have special limitations. See 43 CFR 8340.05.

Off-Highway Vehicle (OHV): The term “OHV” is often used to describe a wide range of summer and winter motorized vehicles that travel off the road system and differ from highway vehicles. Off-Highway Vehicles (OHV) are synonymous with Off-Road Vehicles (ORV as defined in 43 CFR 8340.0-5 (a): Off-road vehicle means any motorized vehicle capable of, or designed for, travel on or immediately over land, water, or other natural terrain, excluding: 1) Any non-amphibious registered motorboat; 2) Any military, fire, emergency, or law enforcement vehicle while being used for emergency purposes; 3) Any vehicle whose use is expressly authorized by the authorized officer, or otherwise officially approved; 4) Vehicles in official use; and 5) Any combat or combat support vehicle when used in times of national defense emergencies.

OHV Area Designations: Refers to the land use plan decisions that permit, establish conditions, or prohibit OHV activities on specific areas of public lands. All public lands are required to have OHV designations (43 CFR 8342.1). The CFR requires all the BLM-managed public lands to be designated as Open, Limited or Closed to off-road vehicles, and provides guidelines for designation. The definitions of Open, Limited and Closed are provided in 43 CFR 8340.0-5 (f), (g) and (h), respectively.

- a. **Open OHV Designations:** Open designations are used for intensive OHV use area where there are no special restrictions or where there are no compelling resource protection needs, user conflicts, or public safety issues to warrant limiting cross-country travel. See 43 CFR 8340.05
- b. **Limited OHV Designations:** The Limited designation is used where OHV use is managed to meet specific resource management objectives. Management of OHVs may include limiting the number or type of vehicles, time or season of use; allowing permitted or licensed use only; limit OHV use to designated roads and trails; or other limitations necessary to meet resource management objectives, including certain competitive or intensive use areas that have special limitations. See 43 CFR 8340.05.
- c. **Closed OHV Designations:** The term “Closed” means an area or trail where off-road vehicle use is prohibited, except where authorized by the BLM. See 43 CFR 36.10-13 and 8342.1.

Planning Criteria: The standards, rules, and other factors developed by managers and interdisciplinary teams used when forming judgments about decision-making, analysis, and data collection during the planning process. Planning criteria streamline and simplify resource management planning actions.

Resource Management Plan: The BLM considers RMPs to be synonymous with land use plans (as defined above), so the terms may be used interchangeably. Land use plan decisions made in RMPs establish goals and objectives for resource management (such as desired future conditions), the measures needed to achieve these goals and objectives, and parameters for using public lands. Land use planning decisions are usually made on a broad scale and customarily guide subsequent site-specific implementation decisions.

Resource Management Planning Area: Most RMPs cover a large planning and management area. As a result, the planning area may be divided into smaller areas, each with differing values, issues, needs and opportunities that may warrant differing management prescriptions.

Routes: Multiple roads, trails and primitive roads; a group or set of roads, trails, and primitive roads. Generically, components of the transportation network are described as “routes.”

Subsistence: Subsistence is defined by federal law as “the customary and traditional uses by rural Alaska residents of wild, renewable resources for direct personal or family consumption as food, shelter, fuel, clothing, tools or transportation; for the making and selling of handicraft articles out of nonedible by-products of fish and wildlife resources taken for personal or family consumption; and for the customary trade, barter or sharing for personal or family consumption.”

Travel Management Plan (TMP): The document that describes the process and decisions related to the selection and management of the Transportation Network. This document can be an appendix to the RMP or a stand-alone document subsequent to the RMP.

Transportation Network: The network of roads, primitive roads and trails (motorized and non-motorized) that are selected (recognized, designated or authorized) for use through the comprehensive TTM process.

This page intentionally left blank

Drop-Down Plan to the
Alaska Federal Lands Long Range Transportation Plan

Bureau of Land Management
Alaska Long Range Transportation Plan

Appendix F

References

This page intentionally left blank

References

Federal Trail Data Standards
(<http://www.nps.gov/gis/trails/>)

43 CFR Section 8340 Off-Road Vehicles

(http://www.access.gpo.gov/nara/cfr/waisidx_01/43cfr8340_01.html)

BLM Land Use Planning handbook 1601-1, Appendix C (http://www.blm.gov/pgdata/etc/medialib/blm/ak/aktest/planning/planning_general.Par.65225.File.dat/blm_lup_handbook.pdf)

BLM Travel and Transportation Planning Manual 1626 (http://www.blm.gov/pgdata/etc/medialib/blm/wo/Information_Resources_Management/policy/blm_manual.Par.38105.File.dat/1626.pdf)

BLM National Management Strategy for Motorized Off-Highway Vehicle Use on Public Lands (http://www.blm.gov/ohv/OHV_FNL.pdf)

BLM Roads and Trails Terminology Report
(<http://www.blm.gov/nstc/library/pdf/TN422.pdf>)

BLM Technical Reference 9113-1 Travel and Transportation Management Planning and Conducting Route Inventories
(<http://www.blm.gov/nstc/library/pdf/TR9113-1.pdf>)

BLM-Alaska Travel Management Guide (http://www.blm.gov/pgdata/etc/medialib/blm/ak/aktest/rec/rec_pdfs.Par.86803.File.dat/AKTravelMgmtGuide-Final.pdf)