

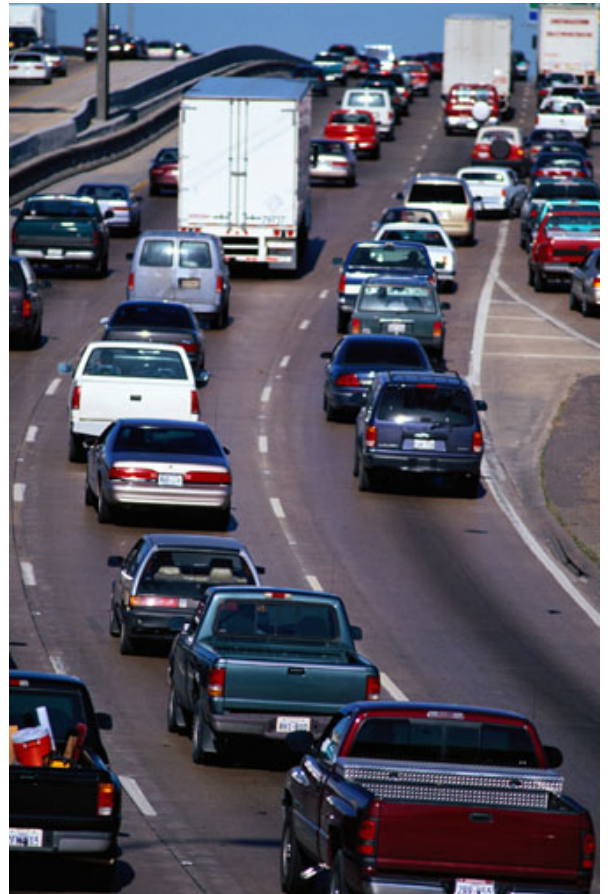
TRANSPORTATION PERFORMANCE MANAGEMENT

The Federal Highway Administration (FHWA) has finalized six interrelated performance rulemakings to implement the TPM framework established by the Moving Ahead for Progress in the 21st Century Act (MAP-21) and the Fixing America's Surface Transportation (FAST) Act.

Collectively, the rules address challenges facing the U.S. transportation system, including:

- improving safety
- maintaining infrastructure condition
- reducing traffic congestion
- improving efficiency of the system and freight movement
- protecting the environment and
- reducing delays in project delivery.

The rules establish national performance measures; State Departments of Transportation (DOTs)



and metropolitan planning organizations (MPOs) will establish targets for applicable measures. New and existing plans will document the strategies and investments used to achieve the targets; progress toward the targets will be reported through new and existing mechanisms.

Learn more at the FHWA TPM web site:

[\(http://www.fhwa.dot.gov/tpm/\)](http://www.fhwa.dot.gov/tpm/)



On-Road Mobile Source Emissions Measure

WHAT: Assessment of the Congestion Mitigation and Air Quality Improvement (CMAQ) Program through measurement of total emissions reduction of on-road mobile source emissions. Read the final rule in the [Federal Register](#) [82 FR 5970 (January 18, 2017)].

WHO: State DOTs whose geographic boundaries include any part of a nonattainment or maintenance area for ozone, carbon monoxide, or particulate matter will establish separate targets for each of these applicable criteria pollutants and precursors. The measure does not apply to a State that does not have any of these nonattainment or maintenance areas.

WHY: The CMAQ program's purpose is to fund transportation projects or programs that contribute to the attainment or maintenance of National Ambient Air Quality Standards (NAAQS) in those specific areas. Congress through MAP-21 required FHWA to establish performance measures in 12 areas, including on-road mobile source emissions for the purpose of carrying out the CMAQ program. [23 CFR 490.807]

WHEN: The first performance period for this measure begins **October 1, 2017**, and ends on **September 30, 2021**. States required to establish 2- and 4-year targets must do so by **May 20, 2018**, for the first performance period. The targets will be reported in the first State baseline performance period report due **October 1, 2018**.

MPOs must either support the State target or establish their own quantifiable targets within 180 days of the State target establishment. MPOs with a population more than 1 million population and with designated nonattainment and maintenance areas must develop both 2-year and 4-year quantifiable targets. Otherwise, only 4-year targets are required.

HOW: Total emissions reduction is calculated by summing 2- and 4-year totals of emissions reductions of applicable criteria pollutant and precursor, in kilograms per day, for all projects funded with CMAQ funds.

Note: The FHWA is preparing guidance on how all rules should be implemented.

