

28 July 2016

Introduction to the DMPTool

Stephanie Simms, Ph.D., Research Data Specialist, California Digital Library

Stephanie Simms is the DMPTool Service Manager and a Research Data Specialist at the California Digital Library (CDL). The CDL is part of the University of California system and is tasked with supporting digital curation activities at all 10 UC campuses. Prior to joining the CDL she was a CLIR Postdoctoral Fellow at the UCLA Library where she worked on various research data management and geospatial data initiatives. She has 10 years of experience conducting archaeological field research in Mexico and Guatemala focused on reconstructing ancient menus and food practices. Stephanie earned her Ph.D. in Archaeology from Boston University and a B.A. in Classical Civilization from UCLA.

Introduction to the DMPTool

Stephanie Simms | California Digital Library | stephanie.simms@ucop.edu

Transportation Librarians Roundtable | 28 July 2016



Roadmap

DMPs: a brief history

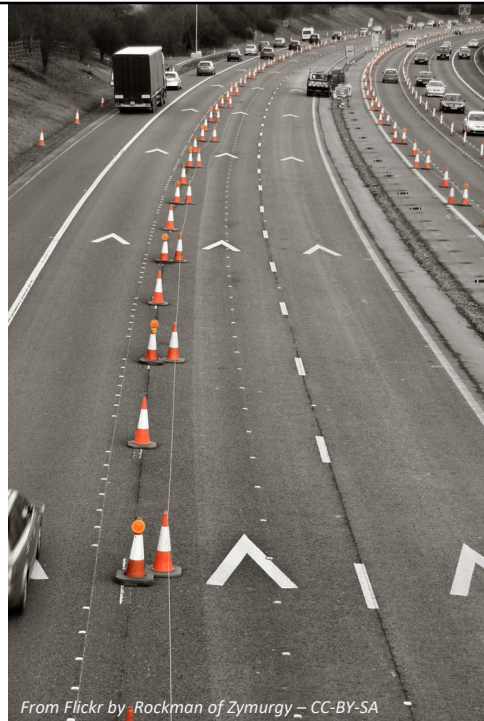
What is the DMPTool?

DMPTool resources

Using the DOT template

Customizing the template

DMP evaluation rubric



From Flickr by [Rockman of Zymurgy](#) - CC-BY-SA

Roadmap

DMPs: a brief history

What is the DMPTool?

DMPTool resources

Using the DOT template

Customizing the template

DMP evaluation rubric



VERY brief history (in 3 slides) to set the stage for why the CDL identified the need for the DMPTool

What is a data management plan?

A document that describes what you will
do with your data

during your research
and after you complete your project

[FAIR principles – FORCE11](#)

This is the generally agreed-upon definition, one that speaks to the goal of a DMP, which is to enable data to be findable, accessible, interoperable, reusable (FAIR principles from FORCE11) – includes persistent identifiers, rich metadata, clear/open licenses, etc.

-International group, philosophical position – data are a public good, part of a knowledge commons

-I'm a proponent of the idea that good data management is just a part of good research practice, another dimension of research methods that maybe won't be treated as a separate thing; but this gets into culture change, slow, uneven across/within disciplines and stakeholders, will be some time before we get there

For researchers & funders:

**A short plan submitted alongside
grant applications**

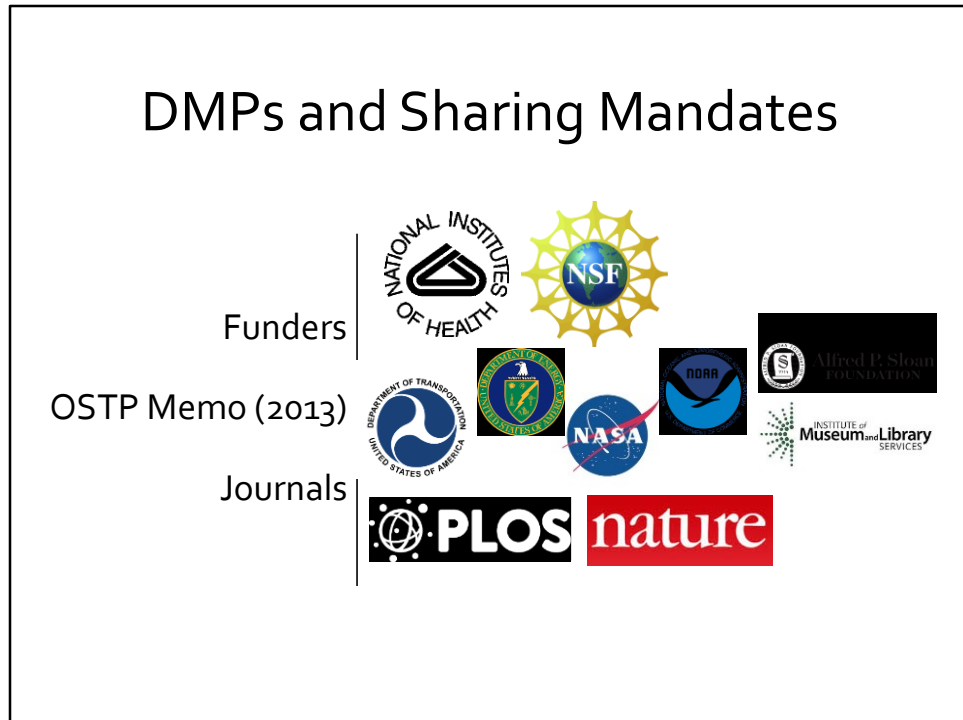


Icon by Madebyoliver at www.flaticon.com

Reality of DMPs is that most researchers and funders in the U.S. perceive them to be an annoying paper-pushing exercise

Multiple reasons for this – a big one is that few of the stakeholders have the experience and technical expertise required to manage digital data well, much less describe their data management practices in a clear narrative format

DMPs and Sharing Mandates



OSTP memo 2013 is the most significant event depicted in this slide, likely the reason for this data mgmt webinar series – terrific goal, launched everyone into unknown territory

Did already have public access policies from NIH and NSF in 2011

More recently policies being issued by publishers to make data underlying published articles available > transparency, reproducibility, good research

-unfortunately, many researchers still perceive these as sticks – confused and frustrated – we all need forums like this one to learn from each other, rapidly evolving landscape

Roadmap

DMPs: a brief history

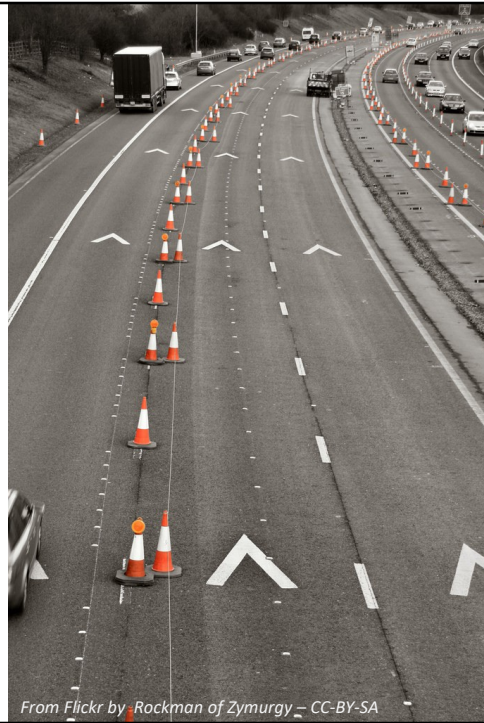
What is the DMPTool?

DMPTool resources

Using the DOT template

Customizing the template

DMP evaluation rubric



From Flickr by [Rockman of Zymurgy](#) - CC-BY-SA

DMPTool

Home DMP Requirements Public DMPs News Help Contact Us About Log In

Data Management Planning Tool

Create, review, and share data management plans that meet institutional and funder requirements.

[Get Started](#)

dmptool.org

PUBLIC DMPs

List of sample data management plans provided by DMPTool users.

- UNDERSTANDING THE ROLE OF PHYSICIAN INTEGRATION WITHIN NURSING HOMES IN POST-ACUTE CARE OUTCOMES
- 2016 Longitudinal public opinion poll, Dr. Bearegard
- A Political Ecology of Value: A Cohort-Based Ethnography of the Environmental Turn in Nicaraguan Urban Social Policy

[View All](#)

DMPTOOL NEWS

Latest information about data management and the DMPTool.

- The 20:51 sprint (Roadmap team-building...
- Mini release (and a mini maintenance wL...
- NIH Policy on Rigor and Reproducibility
- Roadmap team-building exercises: US edi...
- Maintenance and bugs

[More News](#)

DMPTOOL HELP

Overview of how to use the tool, plus resources and guidance on data management.

- Frequently Asked Questions
- Create a DMP
- Administer the DMPTool
- Data management guidance
- Community resources

[View All](#)

DMPTOOL is a service of the University of California Curation Center of the California Digital Library
Copyright © 2010-2016 The Regents of the University of California

[Privacy Policy](#) | [Accessibility Policy](#) | [Terms of Use](#) | [Contact Us](#) | [About](#)

2011 DMPTool v.1 was developed by CDL and founding partners from U.S. institutions and libraries as well as the Digital Curation Centre in the UK (UVA, UIUC, UCSD, UCLA, Smithsonian, DataONE, DCC)

- need for a central clearinghouse of information about NSF and NIH policies, reduce duplication of effort, educate researchers about best practices
- successful, got a grant from Sloan Foundation to build v.2, released in 2014 – additional features, esp. admin features, more templates

The DMPTool is an online wizard that:

- Helps users create ready-to-use DMPs for specific funding agencies
- Provides step-by-step instructions and guidance for how to manage data
- Connects researchers with information and resources at their institution/organization

-Free resource actively developed and maintained by the CDL – primarily to support US-based researchers

-As policies spread throughout the world, our future plans are to merge with UK counterpart DMPonline, just starting now, aim to release new version sometime next year based on their codebase – internationalized, flexible guidance, reflects true nature of research

Roadmap

DMPs: a brief history

What is the DMPTool?

DMPTool resources

Using the DOT template

Customizing the template

DMP evaluation rubric



The most popular features are educational resources: I'll give you a quick tour of those

Not everyone wants to click through the wizard to write their plan, but many come to the tool to find info and guidance, always looking for ways to make this more useful/usable to improve quality of DMPs so that they can actually be implemented



Top two resources are accessible from the homepage, do not require creating an account and logging in

DMP Requirements links directly to funder policies and guidance

Public DMPs list of actual plans created by DMPTool users, elected to share publicly

The screenshot shows the DMPTool website interface. At the top, there is a navigation menu with links for Home, DMP Requirements, Public DMPs, News, Help, Contact Us, and About. Below the menu is a search bar and a 'Log In' button. The main content area is titled 'DMP REQUIREMENTS' and includes instructions on how to use the A-Z links to narrow down the list. Below the instructions are filter buttons for 'A - F', 'G - L', 'M - S', 'T - Z', and 'All'. The main content is a table with four columns: Template, Funder, Funder Links, and Sample Plans (if available). A red arrow points to the row for 'Department of Transportation'.

Template	Funder	Funder Links	Sample Plans (if available)
Alfred P. Sloan Foundation	Alfred P. Sloan Foundation	Alfred P. Sloan Foundation	
BCO-DMO NSF OCE: Biological and Chemical Oceanography	National Science Foundation	NSF OCE Sample and Data Policy, May 2011 (PDF) NSF GEO Data Policies	
Department of Energy: Generic	Department of Energy (DOE)	Policy for Digital Research Data Management	
Department of Energy: Office of Science	Department of Energy (DOE)	DOE Statement on digital data management	
Department of Transportation	Department of Transportation (DOT)	Official DOT Public Access Plan	
DMP Template from DCC	University of California, Office of the President	Information on DCC website	
GoMRI Research Consortia DMP Template 2015	Gulf of Mexico Research Initiative		
Gordon and Betty Moore Foundation	Gordon and Betty Moore Foundation	Guidelines	GBMF: Sample Plan #1 GBMF: Sample Plan #2 GBMF: Sample Plan #3
IMLS (2014-): Digital Content	Institute of Museum and Library Services	Institute of Museum and Library Services (IMLS)	
IMLS (2014-): New Software Tools or Applications	Institute of Museum and Library Services	Institute of Museum and Library Services (IMLS)	

At the bottom of the table, there is a 'View All' button and a pagination link '1 2 3 4 Next • Last +'.

-This is where I make the disclaimer that no federal agencies have officially endorsed the DMPTool

-I promised the DOT lawyers I would say this, gave permission to provide a public template – created and maintained by Sherry Lake and CDL, crowdsourced effort to track policies

-can export template as Word doc and customize it or use it to write a DMP directly in Word

-31 public templates currently, 13 are NSF

-23 federal agencies now require a DMP

Generic templates: DMP Template from DCC, or NSF Generic

Use the search box or the A-Z links below to narrow down the list by plan title. Public DMPs are plans created using the DMPTool and shared publicly by their owners. They are not vetted for quality, completeness, or adherence to funder guidelines.

A - F G - L M - S T - Z All

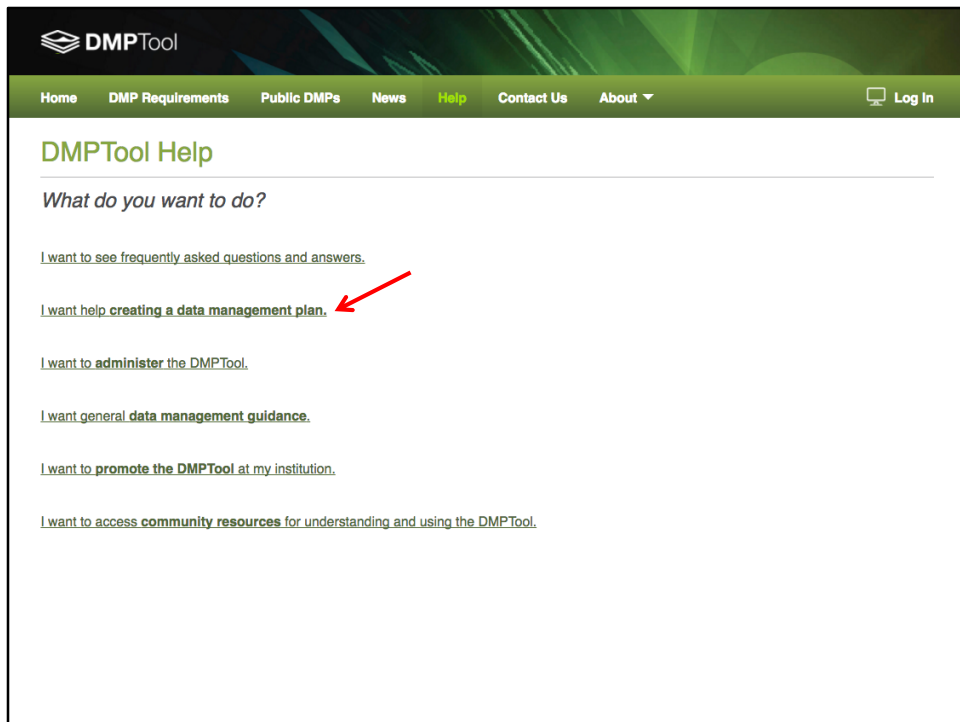
Plan Title	Funder Template	Institution	Owner	Download
Making Data Count: Developing a Data Metrics Pilot	NSF-GEN: Generic	University of California, Office of the President	Carly Strasser	
Collaboration as a means of retention	Institute of Education Sciences (US Dept of Education)	Non Partner Institution	Iuis meza	
Meteorological Measurements of Surface Conditions in East Antarctica in 2015	NSF-AGS: Atmospheric and Geospace Sciences	University of Colorado Boulder	Shelley Knuth	
Project 1 Data Management	NSF-SBE: Social, Behavioral, Economic Sciences	University of Washington	Ryan Scott	
Doctoral Dissertation Research: An Agent-Based Model of Population Changes in a Vulnerable Coastal Environment	NSF-SBE: Social, Behavioral, Economic Sciences	Louisiana State University	Kenan Li	
REU Site: A Multidisciplinary Research Experience in Engineered Bioactive Interfaces and Devices	NSF-GEN: Generic	University of Kentucky	Kimberly Anderson	
Inquiring into Engineering Faculty Assumptions about Students: A Profound Human Systems Intervention	NSF-ENG: Engineering	California Polytechnic State University-San Luis Obispo	Lizabeth Schlemer	
CERTAIN STEM	NSF-EHR: Education and Human Resources	Utah State University	Louis Nadelson	
UNM OILS Student Recruitment	NSF-CISE: Computer and Information Science and Engineering	University of New Mexico	Kathy Dorcas	
Late Season Productivity, Carbon, and Nutrient Dynamics in a Changing Arctic	NSF-EAR: Earth Sciences	Oregon State University	Miguel Goni	

View All « First • Previous 1 2 3 4 5 6 ... Next • Last »

Public DMPs list: can download PDF of actual plans

Participating institutions – optional, enables local administration/customization, branding, Shib authentication alleviates need for users to create accounts

Non-partner institution – create an account, upon login select Not in list, access to all public resources that we maintain



FAQ

Quick Start Guide

help for admins

Data mgmt best practices

promo materials including basic slide decks if you want to give your own DMPTool

workshop (CC-0 licenses)

community resources includes links to training materials, LibGuides, repository info,
etc

DMPTool

Home DMP Requirements Public DMPs News **Help** Contact Us About

Log In

Quick Start Guide

[\[PDF version\]](#)

Table of Contents

- [Who can use the tool](#)
- [How do I log in?](#)
- [Overview of tool features](#)
- [How do I create a DMP?](#)
- [Sharing your DMP publicly](#)
- [How do I get help from someone at my institution?](#)

Who can use the tool?

DMPTool is free for anyone to create data management plans.

- If you are a researcher from one of the [partner institutions](#), you can log in using your institutional credentials. By being affiliated with your institution, you may be presented with institution-specific guidance (displayed as section-specific instructions and/or resource web links) to help you complete your plan.
- If your institution is not a partner, you can create your own account by selecting "Not in List" as your institution upon login.

How do I log in?

Click on **Log In** at the top-right of the home page. You can also click the green "Get Started" button.

Quick Start guide (PDF version): for the 90% of researchers who will contact you the day before their proposal is due, help! What is a DMP? How do I write one? Scroll down to see screenshots and instructions for all of these actions

DMPTool

Home DMP Requirements Public DMPs News **Help** Contact Us About

Log In

DMPTool Help

What do you want to do?

- [I want to see frequently asked questions and answers.](#)
- [I want help creating a data management plan.](#)
- [I want to **administer** the DMPTool.](#)
- [I want general data management guidance.](#)
- [I want to promote the DMPTool at my institution.](#)
- [I want to access community resources for understanding and using the DMPTool.](#)

Quick Start Guide

<https://github.com/CDLUC3/dmptool/wiki/Help-for-Administrators>

This repository Search Pull requests Issues Gist

CDLUC3 / dmptool Unwatch 19 Star 21 Fork 9

Code Issues 107 Pull requests 0 Wiki Pulse Graphs Settings

Help for Administrators

marisa strong edited this page on Jul 15, 2014 · 29 revisions

[Edit](#) [New Page](#)

Setting Up the DMPTool

- [Navigating the DMPTool](#)
- [The administrator navigation bar](#)
- [Customizing your institutional profile](#)
- [About administrator roles](#)
- [Add or edit administrator roles](#)

Quick Overview of Terms

A "template" is a set of questions (i.e., requirements) that form the basis of a data management plan. Customizing a funder template means you are adding institution-specific resources (e.g., suggested answers, guidance, or links to institutional resources) that will appear in the DMPTool wizard for your institution's users. New templates can also be created for institutions by institutional administrators. See the [Glossary](#) for more descriptions of terms used in this wiki.

Adding Resources to Funder Templates

- [Basics: customizing a template](#)
- [Adding/editing template-level resources](#)
- [Adding/editing question-level resources](#)

Pages 15

Find a Page...

- Home
- Administrator Roles
- API
- Creating Templates for Multi Institution Use
- FAQ
- Glossary
- Help for Administrators
- Institution Hierarchy Information
- Institution Profile Customization
- Navigating the DMPTool
- Resources Chart
- Review Functionality

Don't need a Github account to access these pages, can search here, extensive documentation for all admin functions

Can submit issues, bugs, enhancement requests – does require you to create an account, easy process

The screenshot shows the DMPTool website's 'About Partners' page. The header includes the DMPTool logo and a navigation menu with links for Home, DMP Requirements, Public DMPs, News, Help, Contact Us, and About. A 'Log In' button is also present. The main content area features the title 'About Partners' with the email address uc3@ucop.edu to its right. Below the title is a 'Table of Contents' section with a bulleted list of links: [Becoming a DMPTool Partner](#), [Partner Principles](#), [Supporting Activities](#), and [Current List of Partners](#). The 'Becoming a DMPTool Partner' section contains a paragraph explaining the partnership process and a bulleted list of requirements: establishing institutional authentication, customizing the tool, and contributing to the codebase. At the bottom right, there is a bulleted list of communication channels: 'Admin listserv', <https://blog.dmptool.org/>, and [@TheDMPTool](#).

Communication channels

Email us to become a partner using the Contact Us form, directly uc3@ucop.edu

Roadmap

DMPs: a brief history

What is the DMPTool?

DMPTool resources

Using the DOT template

Customizing the template

DMP evaluation rubric



From Flickr by [Rockman of Zymurgy](#) - CC-BY-SA

Data Management Planning Tool

Create, review, and share data management plans that meet institutional and funder requirements.

[Get Started](#)



PUBLIC DMPs

List of sample data management plans provided by DMPTool users.

- UNDERSTANDING THE ROLE OF PHYSICIAN INTEGRATION WITHIN NURSING HOMES IN POST-ACUTE CARE OUTCOMES
- 2016 Longitudinal public opinion poll, Dr. Beauregard
- A Political Ecology of Value: A Cohort-Based Ethnography of the Environmental Turn in Nicaraguan Urban Social Policy

[View All](#)



DMPTOOL NEWS

Latest information about data management and the DMPTool.

- The 20:51 sprint (Roadmap team-building...
- Mini release (and a mini maintenance w...
- NIH Policy on Rigor and Reproducibility
- Roadmap team-building exercises: US edi...
- Maintenance and bugs

[More News](#)

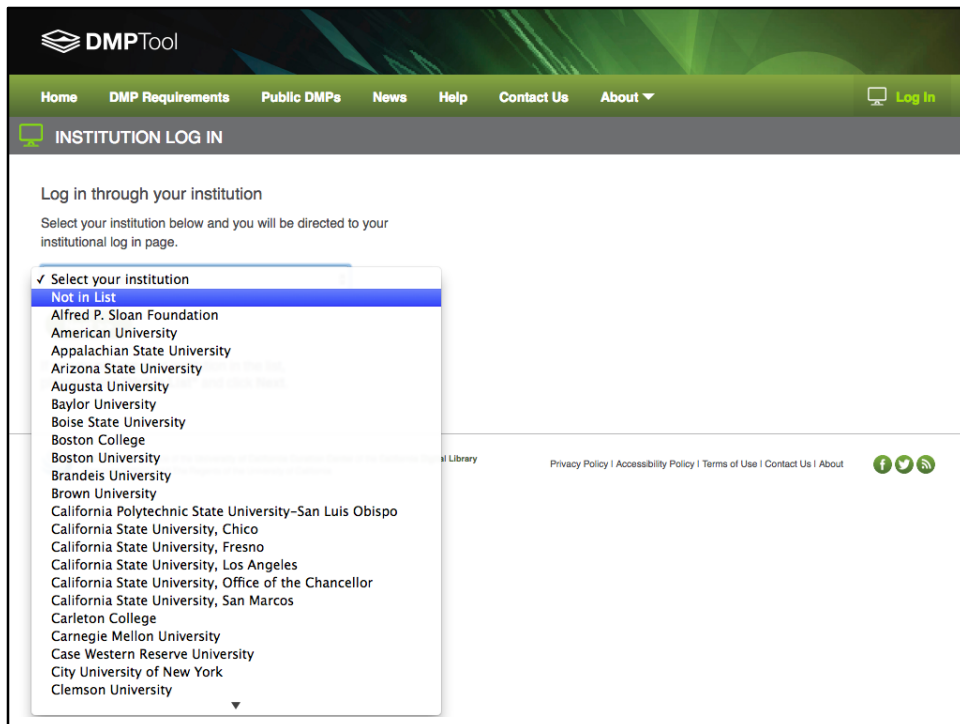


DMPTOOL HELP

Overview of how to use the tool, plus resources and guidance on data management.

- Frequently Asked Questions
- Create a DMP
- Administer the DMPTool
- Data management guidance
- Community resources

[View All](#)



188 participating institutions now – implementing a search box because the list has gotten unwieldy

MY PROFILE

Personal Information Notification Preferences

Please update your account information.


Name

* Username
* First name
* Last name


Contact Information

* Email
Institution

DMP Options

My Roles DMP Administrator 

Orcid

ORCID  orcid.org/0000-0001-9129-3790 [Edit](#) [Delete](#)

API Token




My Token [Generate New Token](#) [Remove Token](#)

[Save](#) [Cancel](#)



DMPTool Welcome! Instadmin 123

Home | My Dashboard | DMP Requirements | Public DMPs | News | Help | Contact Us | About | [Log Out](#)

 University of California, Office of the President  UC3
 Contact UC3


[My Dashboard](#) | [My DMPs](#) | [Create New DMP](#) | [DMP Templates](#) | [Institution Profile](#) | [My Profile](#)

OVERVIEW

My DMPs	My DMPs under Review (where applicable)
8 plans I own	No DMPs are under review.
0 plans I co-own	

[Create New DMP](#)

DMP TEMPLATES

Within my Institution	Funder Requirements 
3 DMP Templates only visible to my institution	1 Public DMP Templates from my institution

[Create New DMP Template](#)

Point to UCOP branding, logo, contact info



University of California, Office of the President

UC3

Contact UC3

CREATE NEW DMP

Start with a DMP Template

To create a new DMP, select a funder or institutional template.

Select Template >>

Copy an Existing DMP

The existing DMPs in this list are either publicly shared by any user, shared within your institution by other DMP creators, or are plans that you have previously created.

Select an existing DMP below and add text to the template.

	Name	Owner
<input type="radio"/>	USGS CDR/ECV DMP	Calli Jenkerson
<input type="radio"/>	A unified approach to preserving cultural software objects and their development histories	DMP dmpcreator
<input type="radio"/>	Atmospheric CO2 Concentrations, Mauna Loa Observatory, Hawaii, 2011-2013	DMP dmpcreator
<input type="radio"/>	Daymet Follow-On: Surface Weather Data with Uncertainty Quantification for Terrestrial Ecosystem Process Models	DMP dmpcreator
<input checked="" type="radio"/>	Multimedia Text Annotation for Students	DMP dmpcreator



University of California, Office of the President

UC3

Contact UC3

My Dashboard | My DMPs | Create New DMP | DMP Templates | Institution Profile | My Profile

SELECT DMP TEMPLATE

Select one of the funder DMP Templates listed to proceed to the next step. The type of template chosen can affect what information you will need to provide in the following steps.

Search

- A - F
- G - L
- M - S
- T - Z
- All

- Alfred P. Sloan Foundation
- Department of Energy (DOE)
- Department of Transportation
- DMP Template from DCC
- GoMRI Research Consortia DMP Template 2015
- Gordon and Betty Moore Foundation
- Institute of Education Sciences (US Dept of Education)
- Institute of Museum and Library Services
- Joint Fire Science Program
- National Institutes of Health
- National Science Foundation
- NEH-ODH: Office of Digital Humanities
- NOAA Data Sharing Template
- U.S. Geological Survey DMP Guidance
- USDA - NIFA: National Institute of Food and Agriculture

<< Back

Next >>





University of California, Office of the President

UC3

Contact UC3

My Dashboard | My DMPs | Create New DMP | DMP Templates | Institution Profile | My Profile

DMP Overview

DMP OVERVIEW

DMP Overview

DMP Template: Department of Transportation

DMP Title: TLR Webinar Test Plan

Proposal Solicitation Number: [input field]

Proposal Submission Deadline: [input field]

- Visibility
- public
 - institutional
 - private

Add Co-owners: Add co-owners; search by name or email address

<< Back

Cancel

Save and Next >>

Plan was successfully created.

DMP DETAILS

Department of Transportation

Click on a section below to edit it at any time.

✔ = Complete

★ = Mandatory

Template Outline

Data description

- ☐ Data format and metadata standards
- ☐ Policies for access and sharing
- ☐ Policies for re-use, redistribution, derivatives
- ☐ Plans for archiving and preservation

Instructions Links

Describe the data that will be gathered in the course of the research project, including whether the data should be preserved for long-term access.

Guidance box size: [small](#) | [medium](#) | [full](#)

Provide a description of the data that you will be gathering in the course of your project. You should address the nature, scope, and scale of the data that will be collected. Describe the characteristics of the data, their relationship to other data, and provide sufficient detail so that reviewers will understand any disclosure risks that may apply. Discuss value of the data over the long-term.

B I U S x_o x' **¶** **☰ ☲ ☱** **☒ ☓** **☰ ☲ ☱** **☒ ☓** **☰ ☲ ☱** **☒ ☓** **☰ ☲ ☱** **☒ ☓** **☰ ☲ ☱** **☒ ☓**

DMP DETAILS

Department of Transportation

Click on a section below to edit it at any time.

✔ = Complete

* = Mandatory

Template Outline

Data description

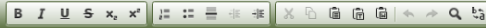
- Data format and metadata standards
- Policies for access and sharing
- Policies for re-use, redistribution, derivatives
- Plans for archiving and preservation

Instructions Links

General Resources

- Official DOT Public Access Plan (PDF)
- National Transportation Library: DOT Public Access
- National Transportation Library: Creating a DMP

University of California, Office of the President Resources
CDL DMPTool Brochure Site



Cancel Changes

Save Response

Save and Next

<< Back

DMP Preview >>

DMP PREVIEW

Export as PDF Export as DOCX Print

DMP Name:	TLR Webinar Test Plan	Last Modified Date:	July 27, 2016
DMP Template:	Department of Transportation	Co-owner[s]:	
Owner:	Instadmin 123	Solicitation Number:	
Institution:	University of California, Office of the President		

Data description

Data format and metadata standards

Policies for access and sharing

Policies for re-use, redistribution, derivatives

Plans for archiving and preservation

This DMP is **Private** [Change Settings](#) Note: when visibility is set to "Public", your DMP will appear on the Public DMPs page of this site and it will be downloadable and copyable.

<< Back

Done

Roadmap

DMPs: a brief history

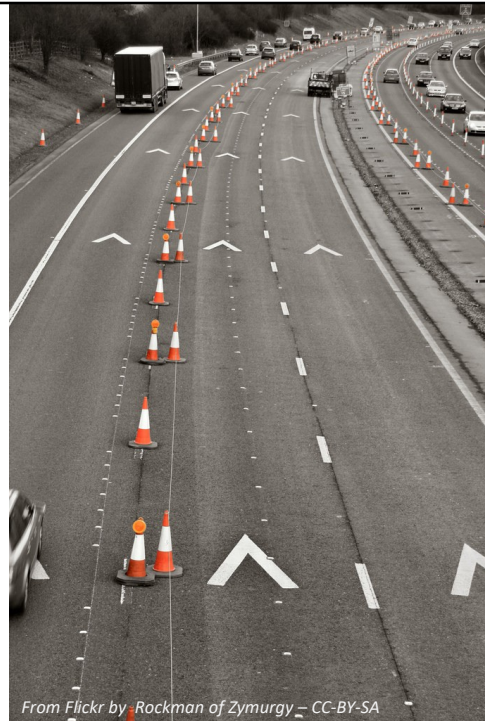
What is the DMPTool?

DMPTool resources

Using the DOT template

Customizing the template

DMP evaluation rubric



From Flickr by [Rockman of Zymurgy](#) - CC-BY-SA



University of California, Office of the President


 UC3

 Contact UC3

My Dashboard | My DMPs | Create New DMP | **DMP Templates** | Institution Profile | My Profile

 **DMP TEMPLATES**

All (43) | Active (31) | Inactive (12) | Institution only (3) | **Public (40)** | Public defined by my Institution (1) 


Name	Institution	Status	Visibility 	Creation Date	Last Modification Date
NSF-SBE: Social, Behavioral, Economic Sciences	National Science Foundation	Active	Public	09/09/2011 01:22PM	09/09/2011 01:22PM
NSF-PHY: Physics	National Science Foundation	Active	Public	09/09/2011 01:25PM	09/09/2011 01:25PM
NSF-CHE: Chemistry Division	National Science Foundation	Active	Public	11/14/2011 05:00PM	11/14/2011 05:00PM
NSF-AST: Astronomical Sciences	National Science Foundation	Active	Public	11/14/2011 05:00PM	11/14/2011 05:00PM
NSF-AGS: Atmospheric and Geospace Sciences	National Science Foundation	Active	Public	11/21/2011 02:00PM	11/21/2011 02:00PM
NSF-CISE: Computer and Information Science and Engineering	National Science Foundation	Active	Public	11/21/2011 02:00PM	11/21/2011 02:00PM
NSF-EHR: Education and Human Resources	National Science Foundation	Active	Public	11/21/2011 02:00PM	11/21/2011 02:00PM
Institute of Education Sciences (US Dept of Education)	Institute of Education Sciences (US Dept of Education)	Active	Public	08/16/2013 01:00PM	08/16/2013 01:00PM

Department of Energy: Generic	Department of Energy (DOE)	Active	Public	09/24/2015 02:16PM	09/24/2015 03:21PM
Testlomake	University of Helsinki, Finland	Inactive	Public	10/08/2015 11:39AM	10/08/2015 11:42AM
NSF-BIO: Biological Sciences (2015-)	National Science Foundation	Active	Public	10/20/2015 06:15PM	10/26/2015 05:56PM
NSF-BIO: Biological Sciences (2013-2015) OBSOLETE--USE MORE RECENT VERSION	Non Partner Institution	Inactive	Public	05/02/2013 04:00PM	10/26/2015 05:57PM
Copy of U.S. Geological Survey DMP Guidance	U.S. Geological Survey	Inactive	Public	11/24/2015 11:29PM	11/24/2015 11:37PM
NSF-GEN: Generic	National Science Foundation	Active	Public	08/01/2011 02:33PM	12/08/2015 10:28PM
NSF-DMR: Materials Research	National Science Foundation	Active	Public	09/09/2011 01:19PM	12/09/2015 10:05PM
NEH-ODH: Office of Digital Humanities	National Endowment for the Humanities	Active	Public	10/14/2011 09:09AM	01/15/2016 12:22AM
U.S. Geological Survey DMP Guidance	U.S. Geological Survey	Active	Public	06/19/2014 02:01PM	04/25/2016 02:26PM
Department of Transportation Customize	Department of Transportation (DOT)	Active	Public	12/07/2015 05:36PM	07/25/2016 07:08PM

[View Less](#)


[Create New Template >>](#)

Customization Overview


 CUSTOMIZATION OVERVIEW

Basic Information

Customized for University of California, Office of the President

Customization Name 

Associated DMP template Department of Transportation 

 Review type Review Required
 Informal Review Allowed
 No Review Needed

Contact Information 

* Contact Email

Creation Date none

Last Modification Date none

Save

<< Choose DMP Template

Customization was successfully created. ✕

CUSTOMIZATION OVERVIEW

Basic Information

Customized for University of California, Office of the President

Customization Name ?

Associated DMP template Department of Transportation ?

Review type ?

- Review Required
- Informal Review Allowed
- No Review Needed

Contact Information ?

Contact Email

Creation Date 2016-07-27 22:26:24 UTC

Last Modification Date 2016-07-27 22:26:24 UTC


[Save](#)

Template Resources for Department of Transportation - Customized for University of California, Office of the President

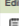


These resources will be displayed for all requirements defined for this template.

Details	Action	Institution	Creation Date	Last Modification Date
Add a resource				

[Customization Details >>](#)

 EXISTING RESOURCES

For University of California, Office of the President

Select	Details	Type	Institution	Creation Date	Last Modification Date	Edit
<input type="radio"/>	CDL: Research life cycle	Links	UCOP	11/22/2011 04:00PM	11/22/2011 04:00PM	
<input type="radio"/>	EZID is a service from the University of Californi...	Guidance	UCOP	10/13/2011 04:00PM	10/13/2011 04:00PM	
<input type="radio"/>	EZID, a service from the University of California ...	Guidance	UCOP	09/20/2011 10:00AM	09/20/2011 10:00AM	
<input type="radio"/>	EZID, a service from the University of California ...	Guidance	UCOP	10/13/2011 04:00PM	10/13/2011 04:00PM	
<input type="radio"/>	EZID, a service from the University of California ...	Guidance	UCOP	11/22/2011 04:00PM	11/22/2011 04:00PM	
<input type="radio"/>	EZID: long-term identifiers made easy	Links	UCOP	09/12/2011 10:32AM	06/18/2015 05:24PM	
<input type="radio"/>	It's important to think about the requirements for...	Guidance	UCOP	05/03/2013 11:00AM	05/03/2013 11:00AM	
<input type="radio"/>	Label for this!	Guidance	UCOP	09/20/2011 10:00AM	05/21/2014 04:59PM	
<input type="radio"/>	Pick a good data center	Guidance	UCOP	05/21/2014 04:27PM	05/21/2014 04:27PM	
<input type="radio"/>	Please contact UC3 with any questions about creat...	Guidance	UCOP	11/22/2011 04:00PM	11/22/2011 04:00PM	
<input type="radio"/>	Please contact UC3 with any questions about creat...	Guidance	UCOP	10/13/2011 04:00PM	10/13/2011 04:00PM	
<input type="radio"/>	Please contact UC3 with any questions about creat...	Guidance	UCOP	10/20/2011 04:00PM	10/20/2011 04:00PM	
<input type="radio"/>	Please contact uc3@ucop.edu with any questions abo...	Guidance	UCOP	09/20/2011 10:00AM	09/20/2011 10:00AM	
<input type="radio"/>	UC3: Citing data	Links	UCOP	09/20/2011 10:00AM	09/20/2011 10:00AM	
<input type="radio"/>	UC3: Copyright, privacy and confidentiality	Links	UCOP	09/20/2011 10:00AM	09/20/2011 10:00AM	
<input type="radio"/>	UC3: Creating data	Links	UCOP	09/20/2011 10:00AM	09/20/2011 10:00AM	
<input type="radio"/>	UC3: Data documentation and metadata	Links	UCOP	09/20/2011 10:00AM	09/20/2011 10:00AM	
<input type="radio"/>	UC3: File formats	Links	UCOP	09/20/2011 10:00AM	09/20/2011 10:00AM	
<input checked="" type="radio"/>	UC3: Merritt Repository Service	Links	UCOP	09/20/2011 10:00AM	09/20/2011 10:00AM	

1 2 Next » Last »

New Resource for Department of Transportation

Resource Type Links Guidance

* Resource Label

Text

<< Back

Cancel

Save Changes

Roadmap

DMPs: a brief history

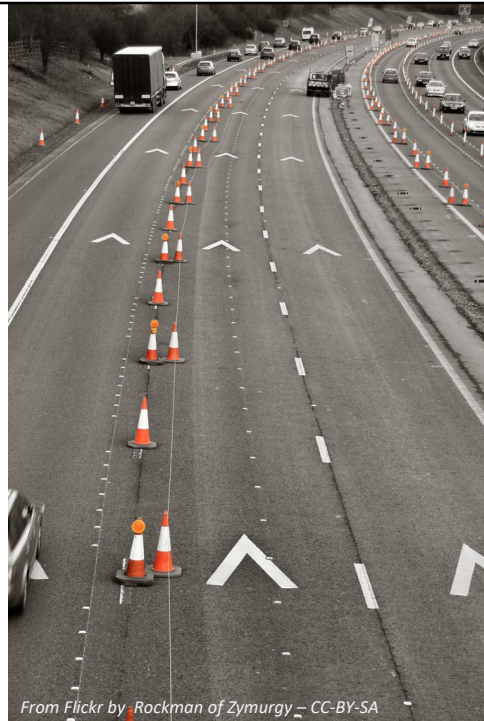
What is the DMPTool?

DMPTool resources

Using the DOT template

Customizing the template

DMP evaluation rubric



From Flickr by [Rockman of Zymurgy](#) - CC-BY-SA

DART: Data Management Plans as a Research Tool

- Data librarians from 5 institutions analyzed 100 NSF DMPs each (n = 500)
- Study to inform research data services
- Analytic rubric to standardize review of DMPs
 - 1 – Complete/detailed
 - 2 – Addressed issue, but incomplete
 - 3 – Did not address the issue

-DMPs are useful sources of info about researcher knowledge, capabilities, practices and needs

-issue of obtaining DMPs from Offices of Research at each institution > need to make DMPs OPEN and available for studies like this

Informed development of research data services at their institutions

Goal: a tool for consistent and robust analysis of DMPs

Data type & format across disciplines (%)

	Complete/ detailed	Addressed, but incomplete	Did not address	N	Scale
All	67	24	9	91	70
BIO	67	17	17	12	60
CISE	67	33	0	6	50
EHR	40	40	20	5	40
ENG	76	19	5	21	30
GEO	68	26	5	38	20
MPS	67	33	0	3	10
SBE	50	17	33	6	0

	Complete/ detailed	Addressed, but incomplete	Did not address	N	Scale
All	45	22	33	91	70
BIO	50	25	25	12	60
CISE	33	17	50	6	50
EHR	40	40	20	5	40
ENG	57	24	19	21	30
GEO	37	21	42	38	20
MPS	67	0	33	3	10
SBE	50	17	33	6	0

Data types

observational, model results,
experimental, qual./quant.,
geospatial, code, etc.

Data formats

hand-written notes, NetCDF,
*.xlsx, *.csv, *.shp, *.shx,
*.dbf, *.mp4, R, etc.

[Whitmire 2016, SlideShare.net, CC-BY 4.0](#)

The difference between data type and data format is often misunderstood, or not recognized as being different. “Data type” is descriptive; it describes what the data is, how it was collected or created, etc. “Data format” is how the data is encoded (mostly digitally, but format can be “handwritten”).

The most striking thing to me about the difference between how well researchers addressed describing data types vs. data formats is in the “did not address” column. In my experience reading through so many DMPs, my impression is that when researchers ignore an aspect of the DMP guidance, it’s because they don’t understand it. There’s no way for me to confirm that, but the things they they don’t address seem to be concepts that are newer to them: policies for reuse, metadata standards, etc. So this tells me that researchers don’t really know what “data format” is. How does this help inform data services? As curators, we know how important data formats are in improving chances for long-term accessibility, and this result tells me that data format is a topic that I may need to mention even if a researcher doesn’t ask.

<https://osf.io/kh2y6/>

Open Science Framework

Browse - Support Search Sign Up Sign In


The DART Project: using data managem... Files Wiki Analytics Registrations Forks

The DART Project: using data management plans as a research tool Public 0

Contributors: Amanda Whitmire, Jacob Carlson, Brian Westra, Patricia Hswe, Susan Parham
 Date created: 2015-10-15 02:44 PM | Last Updated: 2016-06-22 04:36 PM
 Category: Project

Description:
 This is a three-year National Leadership Grant for Libraries Demonstration Project to facilitate a multi-university study of faculty data management plans (DMPs). The primary outputs of this project will be an analytic rubric to standardize the review of data management plans as a means to inform targeted expansion or development of research data services at academic libraries; and a study utilizing the rubric that presents the results of data management plan analyses at five universities. This project was made possible in part by the Institute of Museum and Library Services grant number LG-07-13-0328.
 License: CC0 1.0 Universal

Wiki



ABOUT THE PROJECT

This two-year NLG-Libraries Demonstration Project proposal, led by Oregon State University in collaboration with the University of Oregon, the University of Michigan, the Georgia Institute of Technology and Pennsylvania State University, will facilitate a multi-university study of faculty data management plans (DMPs).
The primary output of this project will be an analytic rubri...
[Read More](#)

Citation osf.io/kh2y6

Components

- Rubric & related files
Whitmire, Carlson, Westra & 2 more
6 contributions
- Data for IJDC paper
Whitmire, Carlson, Westra & 2 more
10 contributions
- Presentations
Whitmire, Carlson, Westra & 2 more

Study materials, rubric, presentations available on the OSF
 -used Qualtrics software to develop and conduct the survey; learn about their
 methods and other findings



Website	dmptool.org
Twitter	@TheDMPTool
Blog	blog.dmptool.org
Email	uc3@ucop.edu
Slides	slideshare.net/stephaniesimms

Trisha